

What goes down our storm drains could end up in our drinking water. When you pollute, you become part of a cycle that harms the entire community. Protect your water. It's just beneath your feet.

The Culprits



**Trash
& Litter**

Motor Oil



**Paint & Paint
Thinner**

Fertilizer



Pesticides

For more information on stormwater pollution prevention or to report illegal dumping, call **(559) 456-3292**.

About FMFCD

The Fresno Metropolitan Flood Control District (FMFCD) is a special district created by our community in 1956 to protect the lives and property of the people of Fresno and Clovis. It manages flood and surface waters, as well as monitors and prevents pollution of our local water bodies and groundwater. The District operates 153 stormwater basins in the Fresno and Clovis area. Its flood control and urban drainage system design concept is considered one of the finest in the country. It provides water supply and quality benefits by capturing and recharging 70-85% of stormwater runoff back into the groundwater aquifer.



Capturing stormwater since 1956.

5469 E. Olive Ave. | Fresno, CA 93727
fresnofloodcontrol.org | (559) 456-3292



What goes down
our storm drains
**could end up
in our water.**



Capturing stormwater since 1956.



Oil, paint, garden and household chemicals should NEVER be washed into the storm drain system. Use cat litter or rags to clean up spills and leaks.

*Before draining a pool, call us at (559) 456-3292.

1
Never wash anything into the gutter*

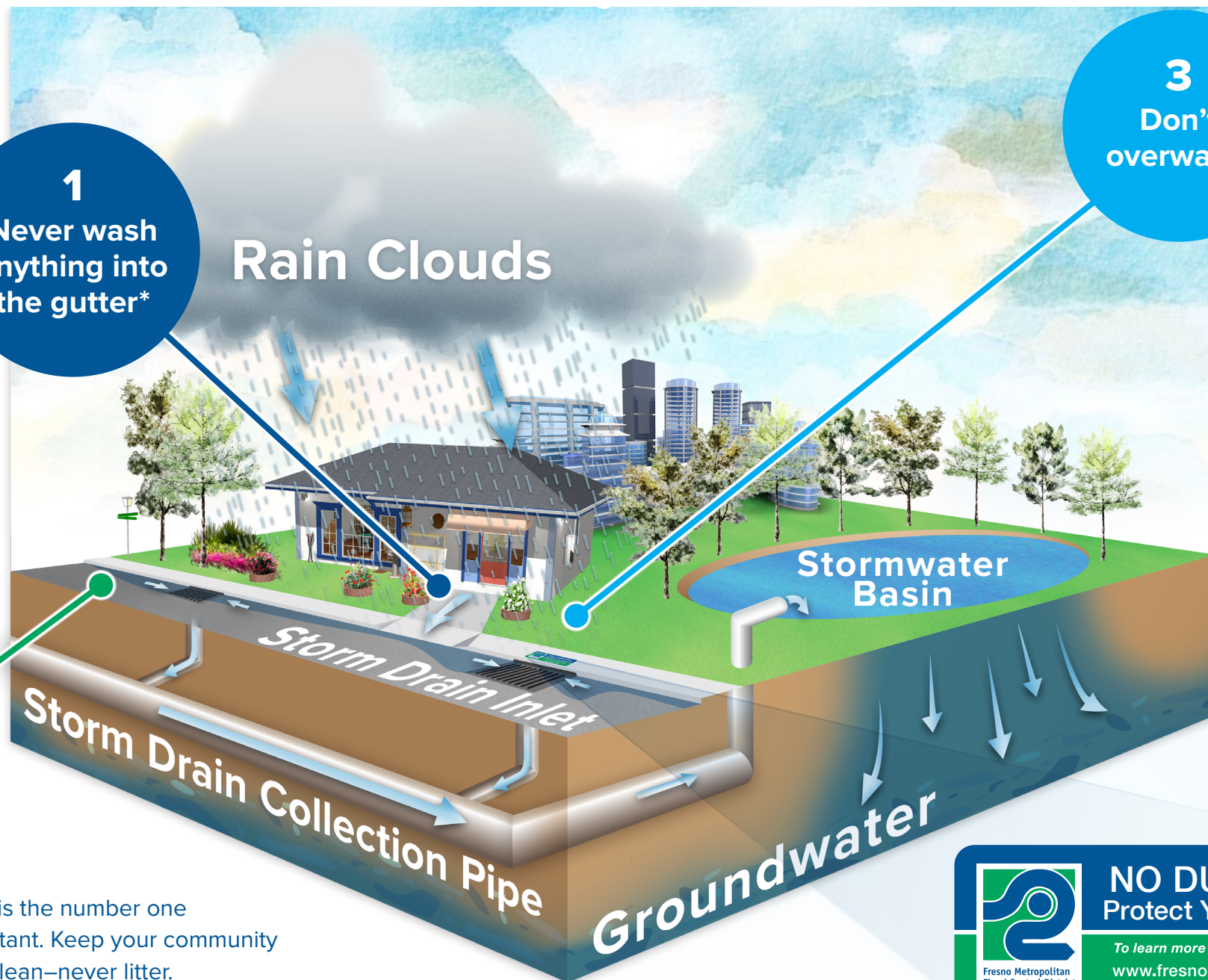
2
Don't litter

By volume, litter is the number one stormwater pollutant. Keep your community and waterways clean—never litter.

Rain Clouds

3
Don't overwater

Water that runs off of lawns can carry pesticides, herbicides, fertilizer and other garden chemicals into the storm drain system where it ends up in stormwater basins.



This decal is displayed near storm drain inlets as a reminder that it's never an option to dump anything into a storm drain.

Clean Stormwater Program

Rainwater flows off of sidewalks and driveways, into the gutter, down the street and into storm drain inlets. From there, it travels in underground pipes to stormwater basins, where it soaks into the groundwater aquifer. Pollutants carried by stormwater runoff could end up in the groundwater aquifer—your main source of drinking water.

