

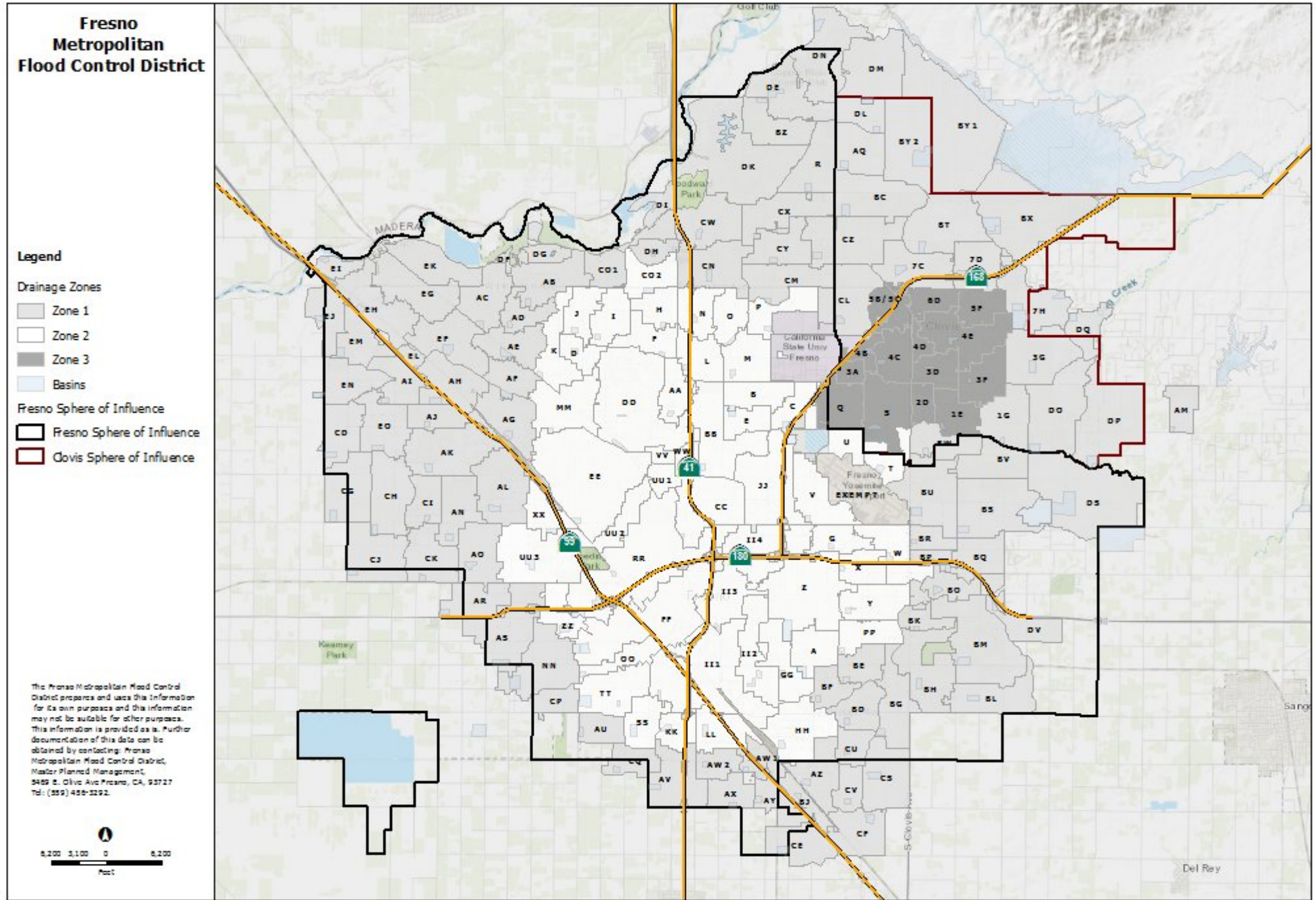
# **Fresno Metropolitan Flood Control District**



## **2021 DRAINAGE FEE SCHEDULE**

### **Fresno County**

Effective Date: 3/1/2021



**DRAINAGE FEE SCHEDULE FOR ZONE 1: PLANNED LOCAL DRAINAGE AREAS**

Area		AE-5, A-L, O	A1, A2, RR	R-1-E, R-1-EH, R-A	R-1-A, R-1-AH	R-1-B, R-1-C, RE	R-1 40%	R-1 45%	R-1 50%	R-2, M-H	R-3	R-4, T-P	M-1, M-2, M-3, C-R, M-1-P, S-L	C-P, C-M, R-P	C-1, C-2, C-3, C-4, C-5, C-6, C-L, P	Total Cost
<b>R</b>	BASIN	\$1,410	\$1,610	\$2,020	\$2,420	\$2,820	\$3,020	\$3,180	\$3,330	\$3,330	\$3,730	\$4,530	\$6,600	\$7,060	\$7,570	\$2,891,960
	PIPE	\$1,840	\$2,080	\$2,760	\$2,990	\$3,250	\$3,380	\$3,490	\$3,580	\$3,580	\$3,840	\$4,100	\$4,760	\$5,030	\$5,310	\$2,780,680
	TOTAL	\$3,250	\$3,690	\$4,780	\$5,410	\$6,070	\$6,400	\$6,670	\$6,910	\$6,910	\$7,570	\$8,630	\$11,360	\$12,090	\$12,880	\$5,672,640
<b>AB</b>	BASIN	\$1,020	\$1,160	\$1,460	\$1,740	\$2,040	\$2,180	\$2,290	\$2,400	\$2,400	\$2,690	\$3,270	\$4,750	\$5,090	\$5,460	\$1,748,490
	PIPE	\$1,000	\$1,130	\$1,500	\$1,630	\$1,770	\$1,840	\$1,900	\$1,950	\$1,950	\$2,090	\$2,230	\$2,590	\$2,740	\$2,890	\$1,420,070
	TOTAL	\$2,020	\$2,290	\$2,960	\$3,370	\$3,810	\$4,020	\$4,190	\$4,350	\$4,350	\$4,780	\$5,500	\$7,340	\$7,830	\$8,350	\$3,168,560
<b>AC</b>	BASIN	\$640	\$730	\$920	\$1,100	\$1,280	\$1,370	\$1,440	\$1,520	\$1,520	\$1,700	\$2,060	\$3,000	\$3,210	\$3,440	\$1,095,117
	PIPE	\$890	\$1,010	\$1,340	\$1,460	\$1,580	\$1,650	\$1,700	\$1,740	\$1,740	\$1,870	\$1,990	\$2,320	\$2,450	\$2,580	\$1,164,819
	TOTAL	\$1,530	\$1,740	\$2,260	\$2,560	\$2,860	\$3,020	\$3,140	\$3,260	\$3,260	\$3,570	\$4,050	\$5,320	\$5,660	\$6,020	\$2,259,936
<b>AD</b>	BASIN	\$1,410	\$1,600	\$2,010	\$2,400	\$2,810	\$3,010	\$3,160	\$3,320	\$3,320	\$3,710	\$4,510	\$6,560	\$7,030	\$7,530	\$1,144,150
	PIPE	\$480	\$540	\$720	\$780	\$840	\$880	\$910	\$930	\$930	\$1,000	\$1,060	\$1,230	\$1,310	\$1,380	\$330,500
	TOTAL	\$1,890	\$2,140	\$2,730	\$3,180	\$3,650	\$3,890	\$4,070	\$4,250	\$4,250	\$4,710	\$5,570	\$7,790	\$8,340	\$8,910	\$1,474,650
<b>AE</b>	BASIN	\$1,790	\$2,050	\$2,570	\$3,070	\$3,590	\$3,840	\$4,040	\$4,230	\$4,230	\$4,740	\$5,760	\$8,380	\$8,970	\$9,620	\$2,524,720
	PIPE	\$630	\$710	\$950	\$1,030	\$1,120	\$1,160	\$1,200	\$1,230	\$1,230	\$1,320	\$1,410	\$1,640	\$1,730	\$1,820	\$715,120
	TOTAL	\$2,420	\$2,760	\$3,520	\$4,100	\$4,710	\$5,000	\$5,240	\$5,460	\$5,460	\$6,060	\$7,170	\$10,020	\$10,700	\$11,440	\$3,239,840
<b>AF</b>	BASIN	\$820	\$930	\$1,170	\$1,390	\$1,630	\$1,750	\$1,830	\$1,920	\$1,920	\$2,150	\$2,620	\$3,810	\$4,080	\$4,370	\$1,371,210
	PIPE	\$500	\$570	\$760	\$820	\$890	\$930	\$960	\$980	\$980	\$1,050	\$1,120	\$1,300	\$1,380	\$1,460	\$510,250
	TOTAL	\$1,320	\$1,500	\$1,930	\$2,210	\$2,520	\$2,680	\$2,790	\$2,900	\$2,900	\$3,200	\$3,740	\$5,110	\$5,460	\$5,830	\$1,881,460
<b>AG</b>	BASIN	\$500	\$570	\$720	\$860	\$1,010	\$1,080	\$1,130	\$1,190	\$1,190	\$1,330	\$1,610	\$2,350	\$2,510	\$2,690	\$1,392,990
	PIPE	\$1,390	\$1,570	\$2,090	\$2,270	\$2,460	\$2,560	\$2,650	\$2,720	\$2,720	\$2,910	\$3,100	\$3,610	\$3,820	\$4,020	\$2,349,300
	TOTAL	\$1,890	\$2,140	\$2,810	\$3,130	\$3,470	\$3,640	\$3,780	\$3,910	\$3,910	\$4,240	\$4,710	\$5,960	\$6,330	\$6,710	\$3,742,290
<b>AH</b>	BASIN	\$1,360	\$1,550	\$1,940	\$2,320	\$2,720	\$2,910	\$3,060	\$3,210	\$3,210	\$3,590	\$4,360	\$6,340	\$6,790	\$7,280	\$4,288,460
	PIPE	\$2,160	\$2,440	\$3,240	\$3,520	\$3,820	\$3,970	\$4,100	\$4,210	\$4,210	\$4,510	\$4,810	\$5,590	\$5,910	\$6,230	\$3,924,020
	TOTAL	\$3,520	\$3,990	\$5,180	\$5,840	\$6,540	\$6,880	\$7,160	\$7,420	\$7,420	\$8,100	\$9,170	\$11,930	\$12,700	\$13,510	\$8,212,480
<b>AI</b>	BASIN	\$1,620	\$1,840	\$2,310	\$2,770	\$3,240	\$3,460	\$3,640	\$3,820	\$3,820	\$4,270	\$5,200	\$7,560	\$8,090	\$8,670	\$2,596,980
	PIPE	\$3,250	\$3,670	\$4,870	\$5,290	\$5,750	\$5,980	\$6,170	\$6,330	\$6,330	\$6,790	\$7,240	\$8,410	\$8,900	\$9,390	\$3,464,880
	TOTAL	\$4,870	\$5,510	\$7,180	\$8,060	\$8,990	\$9,440	\$9,810	\$10,150	\$10,150	\$11,060	\$12,440	\$15,970	\$16,990	\$18,060	\$6,061,860
<b>AJ</b>	BASIN	\$1,800	\$2,050	\$2,570	\$3,070	\$3,600	\$3,850	\$4,040	\$4,240	\$4,240	\$4,750	\$5,770	\$8,390	\$8,990	\$9,630	\$1,625,640
	PIPE	\$590	\$670	\$880	\$960	\$1,040	\$1,090	\$1,120	\$1,150	\$1,150	\$1,230	\$1,320	\$1,530	\$1,620	\$1,700	\$433,080
	TOTAL	\$2,390	\$2,720	\$3,450	\$4,030	\$4,640	\$4,940	\$5,160	\$5,390	\$5,390	\$5,980	\$7,090	\$9,920	\$10,610	\$11,330	\$2,058,720
<b>AK</b>	BASIN	\$1,040	\$1,190	\$1,490	\$1,790	\$2,090	\$2,240	\$2,350	\$2,470	\$2,470	\$2,760	\$3,350	\$4,880	\$5,220	\$5,600	\$3,176,510
	PIPE	\$1,820	\$2,050	\$2,730	\$2,960	\$3,220	\$3,340	\$3,450	\$3,540	\$3,540	\$3,800	\$4,050	\$4,710	\$4,980	\$5,250	\$4,122,480
	TOTAL	\$2,860	\$3,240	\$4,220	\$4,750	\$5,310	\$5,580	\$5,800	\$6,010	\$6,010	\$6,560	\$7,400	\$9,590	\$10,200	\$10,850	\$7,298,990
<b>AL</b>	BASIN	\$1,060	\$1,210	\$1,520	\$1,820	\$2,130	\$2,280	\$2,390	\$2,510	\$2,510	\$2,810	\$3,420	\$4,970	\$5,320	\$5,700	\$2,597,880
	PIPE	\$2,070	\$2,340	\$3,110	\$3,380	\$3,670	\$3,820	\$3,940	\$4,050	\$4,050	\$4,340	\$4,630	\$5,370	\$5,680	\$6,000	\$3,880,220
	TOTAL	\$3,130	\$3,550	\$4,630	\$5,200	\$5,800	\$6,100	\$6,330	\$6,560	\$6,560	\$7,150	\$8,050	\$10,340	\$11,000	\$11,700	\$6,478,100
<b>AM</b>	BASIN	\$2,370	\$2,370	\$2,970	\$3,550	\$4,150	\$4,450	\$4,670	\$4,900	\$4,900	\$5,480	\$6,670	\$9,700	\$10,390	\$11,130	\$1,260,966
	PIPE	\$5,950	\$5,950	\$7,900	\$8,590	\$9,330	\$9,700	\$10,010	\$10,280	\$10,280	\$11,010	\$11,750	\$13,650	\$14,440	\$15,230	\$2,886,860
	TOTAL	\$8,320	\$8,320	\$10,870	\$12,140	\$13,480	\$14,150	\$14,680	\$15,180	\$15,180	\$16,490	\$18,420	\$23,350	\$24,830	\$26,360	\$4,147,826

**DRAINAGE FEE SCHEDULE FOR ZONE 1: PLANNED LOCAL DRAINAGE AREAS**

Area		AE-5, A-L, O	A1, A2, RR	R-1-E, R-1-EH, R-A	R-1-A, R-1-AH	R-1-B, R-1-C, RE	R-1 40%	R-1 45%	R-1 50%	R-2, M-H	R-3	R-4, T-P	M-1, M-2, M-3, C-R, M-1-P, S-L	C-P, C-M, R-P	C-1, C-2, C-3, C-4, C-5, C-6, C-L, P	Total Cost
AN	BASIN	\$1,680	\$1,920	\$2,410	\$2,880	\$3,370	\$3,600	\$3,790	\$3,970	\$3,970	\$4,440	\$5,400	\$7,860	\$8,420	\$9,020	\$2,377,910
	PIPE	\$1,820	\$2,050	\$2,720	\$2,960	\$3,210	\$3,340	\$3,450	\$3,540	\$3,540	\$3,790	\$4,050	\$4,700	\$4,970	\$5,250	\$2,162,840
	TOTAL	\$3,500	\$3,970	\$5,130	\$5,840	\$6,580	\$6,940	\$7,240	\$7,510	\$7,510	\$8,230	\$9,450	\$12,560	\$13,390	\$14,270	\$4,540,750
AO	BASIN	\$1,640	\$1,870	\$2,340	\$2,800	\$3,270	\$3,500	\$3,680	\$3,860	\$3,860	\$4,320	\$5,250	\$7,640	\$8,180	\$8,770	\$2,944,840
	PIPE	\$3,880	\$4,380	\$5,810	\$6,320	\$6,860	\$7,130	\$7,360	\$7,560	\$7,560	\$8,100	\$8,640	\$10,040	\$10,620	\$11,200	\$5,223,830
	TOTAL	\$5,520	\$6,250	\$8,150	\$9,120	\$10,130	\$10,630	\$11,040	\$11,420	\$11,420	\$12,420	\$13,890	\$17,680	\$18,800	\$19,970	\$8,168,670
AQ	BASIN	\$1,610	\$1,830	\$2,300	\$2,750	\$3,210	\$3,440	\$3,610	\$3,790	\$3,790	\$4,240	\$5,160	\$7,500	\$8,030	\$8,610	\$3,458,430
	PIPE	\$3,750	\$4,240	\$5,630	\$6,120	\$6,640	\$6,910	\$7,130	\$7,320	\$7,320	\$7,840	\$8,370	\$9,720	\$10,280	\$10,850	\$5,302,330
	TOTAL	\$5,360	\$6,070	\$7,930	\$8,870	\$9,850	\$10,350	\$10,740	\$11,110	\$11,110	\$12,080	\$13,530	\$17,220	\$18,310	\$19,460	\$8,760,760
AR	BASIN	\$1,700	\$1,930	\$2,430	\$2,900	\$3,390	\$3,630	\$3,820	\$4,000	\$4,000	\$4,480	\$5,450	\$7,920	\$8,480	\$9,090	\$3,489,440
	PIPE	\$4,920	\$5,560	\$7,380	\$8,020	\$8,710	\$9,050	\$9,350	\$9,590	\$9,590	\$10,280	\$10,970	\$12,740	\$13,480	\$14,220	\$6,261,410
	TOTAL	\$6,620	\$7,490	\$9,810	\$10,920	\$12,100	\$12,680	\$13,170	\$13,590	\$13,590	\$14,760	\$16,420	\$20,660	\$21,960	\$23,310	\$9,750,850
AS	BASIN	\$1,340	\$1,530	\$1,920	\$2,290	\$2,680	\$2,870	\$3,020	\$3,170	\$3,170	\$3,540	\$4,310	\$6,270	\$6,710	\$7,190	\$4,256,450
	PIPE	\$4,090	\$4,620	\$6,130	\$6,660	\$7,230	\$7,520	\$7,760	\$7,970	\$7,970	\$8,540	\$9,110	\$10,580	\$11,190	\$11,810	\$9,103,660
	TOTAL	\$5,430	\$6,150	\$8,050	\$8,950	\$9,910	\$10,390	\$10,780	\$11,140	\$11,140	\$12,080	\$13,420	\$16,850	\$17,900	\$19,000	\$13,360,110
AU	BASIN	\$3,500	\$3,990	\$5,010	\$5,990	\$7,010	\$7,500	\$7,880	\$8,270	\$8,270	\$9,250	\$11,250	\$16,360	\$17,520	\$18,780	\$3,031,950
	PIPE	\$3,560	\$4,020	\$5,340	\$6,310	\$7,300	\$6,550	\$6,770	\$6,950	\$6,950	\$7,440	\$7,940	\$9,220	\$9,760	\$10,290	\$2,522,870
	TOTAL	\$7,060	\$8,010	\$10,350	\$11,800	\$13,310	\$14,050	\$14,650	\$15,220	\$15,220	\$16,690	\$19,190	\$25,580	\$27,280	\$29,070	\$5,554,820
AV	BASIN	\$1,330	\$1,520	\$1,910	\$2,280	\$2,670	\$2,860	\$3,000	\$3,150	\$3,150	\$3,520	\$4,280	\$6,230	\$6,670	\$7,150	\$4,509,070
	PIPE	\$5,410	\$6,110	\$8,110	\$8,810	\$9,570	\$9,950	\$10,270	\$10,540	\$10,540	\$11,300	\$12,060	\$14,000	\$14,820	\$15,630	\$10,348,590
	TOTAL	\$6,740	\$7,630	\$10,020	\$11,090	\$12,240	\$12,810	\$13,270	\$13,690	\$13,690	\$14,820	\$16,340	\$20,230	\$21,490	\$22,780	\$14,857,660
AW1	BASIN	\$1,180	\$1,340	\$1,680	\$2,010	\$2,360	\$2,520	\$2,650	\$2,780	\$2,780	\$3,110	\$3,780	\$5,500	\$5,890	\$6,310	\$1,733,820
	PIPE	\$5,540	\$6,260	\$8,310	\$9,030	\$9,810	\$10,200	\$10,530	\$10,800	\$10,800	\$11,580	\$12,360	\$14,350	\$15,180	\$16,010	\$4,522,710
	TOTAL	\$6,720	\$7,600	\$9,990	\$11,040	\$12,170	\$12,720	\$13,180	\$13,580	\$13,580	\$14,690	\$16,140	\$19,850	\$21,070	\$22,320	\$6,256,530
AW2	BASIN	\$900	\$1,030	\$1,290	\$1,540	\$1,800	\$1,930	\$2,030	\$2,130	\$2,130	\$2,380	\$2,890	\$4,210	\$4,510	\$4,830	\$1,395,650
	PIPE	\$990	\$1,120	\$1,490	\$1,620	\$1,760	\$1,830	\$1,890	\$1,940	\$1,940	\$2,080	\$2,210	\$2,570	\$2,720	\$2,870	\$852,850
	TOTAL	\$1,890	\$2,150	\$2,780	\$3,160	\$3,560	\$3,760	\$3,920	\$4,070	\$4,070	\$4,460	\$5,100	\$6,780	\$7,230	\$7,700	\$2,248,500
AX	BASIN	\$1,290	\$1,470	\$1,850	\$2,210	\$2,590	\$2,770	\$2,910	\$3,050	\$3,050	\$3,420	\$4,150	\$6,040	\$6,470	\$6,930	\$2,047,230
	PIPE	\$2,220	\$2,510	\$3,330	\$3,620	\$3,930	\$4,080	\$4,220	\$4,330	\$4,330	\$4,640	\$4,950	\$5,750	\$6,080	\$6,410	\$1,947,650
	TOTAL	\$3,510	\$3,980	\$5,180	\$5,830	\$6,520	\$6,850	\$7,130	\$7,380	\$7,380	\$8,060	\$9,100	\$11,790	\$12,550	\$13,340	\$3,994,880
AY	BASIN	\$1,730	\$1,970	\$2,470	\$2,960	\$3,460	\$3,700	\$3,890	\$4,080	\$4,080	\$4,570	\$5,550	\$8,080	\$8,650	\$9,270	\$3,153,000
	PIPE	\$2,330	\$2,640	\$3,500	\$3,800	\$4,130	\$4,290	\$4,430	\$4,550	\$4,550	\$4,880	\$5,200	\$6,040	\$6,390	\$6,740	\$2,358,880
	TOTAL	\$4,060	\$4,610	\$5,970	\$6,760	\$7,590	\$7,990	\$8,320	\$8,630	\$8,630	\$9,450	\$10,750	\$14,120	\$15,040	\$16,010	\$5,511,880
AZ	BASIN	\$540	\$610	\$770	\$920	\$1,070	\$1,150	\$1,210	\$1,270	\$1,270	\$1,420	\$1,720	\$2,510	\$2,680	\$2,880	\$1,433,270
	PIPE	\$1,940	\$2,190	\$2,910	\$3,170	\$3,440	\$3,570	\$3,690	\$3,790	\$3,790	\$4,060	\$4,330	\$5,030	\$5,320	\$5,610	\$3,017,880
	TOTAL	\$2,480	\$2,800	\$3,680	\$4,090	\$4,510	\$4,720	\$4,900	\$5,060	\$5,060	\$5,480	\$6,050	\$7,540	\$8,000	\$8,490	\$4,451,150
BC	BASIN	\$1,730	\$1,970	\$2,470	\$2,950	\$3,450	\$3,690	\$3,880	\$4,070	\$4,070	\$4,550	\$5,540	\$8,060	\$8,630	\$9,250	\$4,739,270
	PIPE	\$2,560	\$2,890	\$3,830	\$4,170	\$4,520	\$4,700	\$4,860	\$4,980	\$4,980	\$5,340	\$5,700	\$6,620	\$7,000	\$7,380	\$5,156,740
	TOTAL	\$4,290	\$4,860	\$6,300	\$7,120	\$7,970	\$8,390	\$8,740	\$9,050	\$9,050	\$9,890	\$11,240	\$14,680	\$15,630	\$16,630	\$9,896,010

**DRAINAGE FEE SCHEDULE FOR ZONE 1: PLANNED LOCAL DRAINAGE AREAS**

Area		AE-5, A-L, O	A1, A2, RR	R-1-E, R-1-EH, R-A	R-1-A, R-1-AH	R-1-B, R-1-C, RE	R-1 40%	R-1 45%	R-1 50%	R-2, M-H	R-3	R-4, T-P	M-1, M-2, M-3, C-R, M-1-P, S-L	C-P, C-M, R-P	C-1, C-2, C-3, C-4, C-5, C-6, C-L, P	Total Cost
BD	BASIN	\$1,350	\$1,540	\$1,940	\$2,310	\$2,710	\$2,900	\$3,050	\$3,190	\$3,190	\$3,570	\$4,350	\$6,320	\$6,770	\$7,260	\$2,246,500
	PIPE	\$2,540	\$2,870	\$3,800	\$4,130	\$4,490	\$4,670	\$4,820	\$4,950	\$4,950	\$5,300	\$5,660	\$6,570	\$6,950	\$7,330	\$2,820,550
	TOTAL	\$3,890	\$4,410	\$5,740	\$6,440	\$7,200	\$7,570	\$7,870	\$8,140	\$8,140	\$8,870	\$10,010	\$12,890	\$13,720	\$14,590	\$5,067,050
BE	BASIN	\$1,420	\$1,620	\$2,030	\$2,420	\$2,840	\$3,030	\$3,190	\$3,350	\$3,350	\$3,740	\$4,550	\$6,620	\$7,090	\$7,600	\$1,298,860
	PIPE	\$1,980	\$2,240	\$2,970	\$3,230	\$3,500	\$3,640	\$3,760	\$3,860	\$3,860	\$4,140	\$4,410	\$5,130	\$5,420	\$5,720	\$1,553,630
	TOTAL	\$3,400	\$3,860	\$5,000	\$5,650	\$6,340	\$6,670	\$6,950	\$7,210	\$7,210	\$7,880	\$8,960	\$11,750	\$12,510	\$13,320	\$2,852,490
BF	BASIN	\$1,940	\$2,210	\$2,770	\$3,320	\$3,880	\$4,150	\$4,360	\$4,580	\$4,580	\$5,120	\$6,220	\$9,050	\$9,690	\$10,390	\$1,671,200
	PIPE	\$1,220	\$1,380	\$1,830	\$1,990	\$2,160	\$2,240	\$2,310	\$2,380	\$2,380	\$2,550	\$2,720	\$3,150	\$3,340	\$3,520	\$854,240
	TOTAL	\$3,160	\$3,590	\$4,600	\$5,310	\$6,040	\$6,390	\$6,670	\$6,960	\$6,960	\$7,670	\$8,940	\$12,200	\$13,030	\$13,910	\$2,525,440
BG	BASIN	\$1,600	\$1,820	\$2,290	\$2,730	\$3,200	\$3,420	\$3,600	\$3,770	\$3,770	\$4,220	\$5,130	\$7,460	\$7,990	\$8,570	\$3,735,150
	PIPE	\$2,890	\$3,260	\$4,330	\$4,710	\$5,110	\$5,310	\$5,490	\$5,630	\$5,630	\$6,040	\$6,440	\$7,480	\$7,910	\$8,350	\$4,521,100
	TOTAL	\$4,490	\$5,080	\$6,620	\$7,440	\$8,310	\$8,730	\$9,090	\$9,400	\$9,400	\$10,260	\$11,570	\$14,940	\$15,900	\$16,920	\$8,256,250
BH	BASIN	\$970	\$1,110	\$1,390	\$1,660	\$1,940	\$2,080	\$2,180	\$2,290	\$2,290	\$2,560	\$3,110	\$4,530	\$4,850	\$5,200	\$1,946,090
	PIPE	\$3,510	\$3,960	\$5,260	\$5,720	\$6,210	\$6,450	\$6,660	\$6,840	\$6,840	\$7,330	\$7,820	\$9,080	\$9,610	\$10,140	\$6,179,960
	TOTAL	\$4,480	\$5,070	\$6,650	\$7,380	\$8,150	\$8,530	\$8,840	\$9,130	\$9,130	\$9,890	\$10,930	\$13,610	\$14,460	\$15,340	\$8,126,050
BJ	BASIN	\$880	\$1,000	\$1,260	\$1,510	\$1,760	\$1,890	\$1,980	\$2,080	\$2,080	\$2,330	\$2,830	\$4,110	\$4,400	\$4,720	\$1,095,850
	PIPE	\$2,750	\$3,110	\$4,130	\$4,490	\$4,870	\$5,070	\$5,230	\$5,370	\$5,370	\$5,750	\$6,140	\$7,130	\$7,540	\$7,960	\$1,894,520
	TOTAL	\$3,630	\$4,110	\$5,390	\$6,000	\$6,630	\$6,960	\$7,210	\$7,450	\$7,450	\$8,080	\$8,970	\$11,240	\$11,940	\$12,680	\$2,990,370
BK	BASIN	\$2,060	\$2,350	\$2,950	\$3,520	\$4,120	\$4,410	\$4,640	\$4,860	\$4,860	\$5,440	\$6,620	\$9,620	\$10,300	\$11,050	\$2,090,100
	PIPE	\$2,320	\$2,620	\$3,480	\$3,780	\$4,110	\$4,270	\$4,410	\$4,530	\$4,530	\$4,850	\$5,170	\$6,010	\$6,360	\$6,710	\$1,499,930
	TOTAL	\$4,380	\$4,970	\$6,430	\$7,300	\$8,230	\$8,680	\$9,050	\$9,390	\$9,390	\$10,290	\$11,790	\$15,630	\$16,660	\$17,760	\$3,590,030
BL	BASIN	\$1,590	\$1,810	\$2,270	\$2,720	\$3,180	\$3,400	\$3,580	\$3,750	\$3,750	\$4,200	\$5,100	\$7,430	\$7,950	\$8,520	\$4,467,370
	PIPE	\$4,120	\$4,650	\$6,170	\$6,710	\$7,290	\$7,570	\$7,820	\$8,030	\$8,030	\$8,600	\$9,180	\$10,660	\$11,280	\$11,900	\$7,392,400
	TOTAL	\$5,710	\$6,460	\$8,440	\$9,430	\$10,470	\$10,970	\$11,400	\$11,780	\$11,780	\$12,800	\$14,280	\$18,090	\$19,230	\$20,420	\$11,859,770
BM	BASIN	\$770	\$880	\$1,100	\$1,320	\$1,540	\$1,650	\$1,730	\$1,820	\$1,820	\$2,040	\$2,470	\$3,600	\$3,850	\$4,130	\$3,141,200
	PIPE	\$3,600	\$4,070	\$5,400	\$5,870	\$6,370	\$6,620	\$6,840	\$7,020	\$7,020	\$7,520	\$8,030	\$9,320	\$9,860	\$10,400	\$10,836,250
	TOTAL	\$4,370	\$4,950	\$6,500	\$7,190	\$7,910	\$8,270	\$8,570	\$8,840	\$8,840	\$9,560	\$10,500	\$12,920	\$13,710	\$14,530	\$13,977,450
BO	BASIN	\$1,090	\$1,250	\$1,560	\$1,870	\$2,190	\$2,340	\$2,460	\$2,580	\$2,580	\$2,890	\$3,510	\$5,110	\$5,470	\$5,870	\$1,016,954
	PIPE	\$2,220	\$2,510	\$3,330	\$3,620	\$3,930	\$4,090	\$4,220	\$4,330	\$4,330	\$4,640	\$4,950	\$5,750	\$6,090	\$6,420	\$1,588,183
	TOTAL	\$3,310	\$3,760	\$4,890	\$5,490	\$6,120	\$6,430	\$6,680	\$6,910	\$6,910	\$7,530	\$8,460	\$10,860	\$11,560	\$12,290	\$2,605,137
BP	BASIN	\$3,240	\$3,690	\$4,630	\$5,530	\$6,470	\$6,920	\$7,280	\$7,640	\$7,640	\$8,540	\$10,390	\$15,110	\$16,180	\$17,340	\$2,137,910
	PIPE	\$3,430	\$3,870	\$5,140	\$5,590	\$6,070	\$6,310	\$6,510	\$6,680	\$6,680	\$7,160	\$7,640	\$8,880	\$9,390	\$9,910	\$1,256,170
	TOTAL	\$6,670	\$7,560	\$9,770	\$11,120	\$12,540	\$13,230	\$13,790	\$14,320	\$14,320	\$15,700	\$18,030	\$23,990	\$25,570	\$27,250	\$3,394,080
BQ	BASIN	\$1,420	\$1,620	\$2,040	\$2,440	\$2,850	\$3,050	\$3,200	\$3,360	\$3,360	\$3,760	\$4,570	\$6,650	\$7,120	\$7,630	\$2,601,610
	PIPE	\$3,320	\$3,750	\$4,980	\$5,420	\$5,880	\$6,110	\$6,310	\$6,480	\$6,480	\$6,940	\$7,410	\$8,610	\$9,100	\$9,600	\$3,884,640
	TOTAL	\$4,740	\$5,370	\$7,020	\$7,860	\$8,730	\$9,160	\$9,510	\$9,840	\$9,840	\$10,700	\$11,980	\$15,260	\$16,220	\$17,230	\$6,486,250
BR	BASIN	\$2,100	\$2,390	\$3,000	\$3,590	\$4,200	\$4,490	\$4,720	\$4,950	\$4,950	\$5,540	\$6,740	\$9,800	\$10,490	\$11,250	\$2,676,220
	PIPE	\$3,130	\$3,540	\$4,700	\$5,110	\$5,550	\$5,760	\$5,950	\$6,110	\$6,110	\$6,550	\$6,990	\$8,110	\$8,580	\$9,050	\$2,215,320
	TOTAL	\$5,230	\$5,930	\$7,700	\$8,700	\$9,750	\$10,250	\$10,670	\$11,060	\$11,060	\$12,090	\$13,730	\$17,910	\$19,070	\$20,300	\$4,891,540

**DRAINAGE FEE SCHEDULE FOR ZONE 1: PLANNED LOCAL DRAINAGE AREAS**

Area		AE-5, A-L, O	A1, A2, RR	R-1-E, R-1-EH, R-A	R-1-A, R-1-AH	R-1-B, R-1-C, RE	R-1 40%	R-1 45%	R-1 50%	R-2, M-H	R-3	R-4, T-P	M-1, M-2, M-3, C-R, M-1-P, S-L	C-P, C-M, R-P	C-1, C-2, C-3, C-4, C-5, C-6, C-L, P	Total Cost
BS	BASIN	\$1,540	\$1,750	\$2,200	\$2,630	\$3,070	\$3,290	\$3,460	\$3,630	\$3,630	\$4,060	\$4,930	\$7,180	\$7,690	\$8,240	\$4,489,290
	PIPE	\$4,170	\$4,720	\$6,260	\$6,800	\$7,390	\$7,680	\$7,930	\$8,140	\$8,140	\$8,720	\$9,310	\$10,810	\$11,430	\$12,060	\$9,381,720
	TOTAL	\$5,710	\$6,470	\$8,460	\$9,430	\$10,460	\$10,970	\$11,390	\$11,770	\$11,770	\$12,780	\$14,240	\$17,990	\$19,120	\$20,300	\$13,871,010
BT	BASIN	\$2,200	\$2,510	\$3,150	\$3,770	\$4,410	\$4,710	\$4,960	\$5,200	\$5,200	\$5,820	\$7,070	\$10,290	\$11,010	\$11,810	\$4,576,050
	PIPE	\$3,970	\$4,490	\$5,960	\$6,470	\$7,030	\$7,310	\$7,550	\$7,750	\$7,750	\$8,300	\$8,860	\$10,290	\$10,880	\$11,480	\$7,282,080
	TOTAL	\$6,170	\$7,000	\$9,110	\$10,240	\$11,440	\$12,020	\$12,510	\$12,950	\$12,950	\$14,120	\$15,930	\$20,580	\$21,890	\$23,290	\$11,858,130
BU	BASIN	\$510	\$580	\$730	\$870	\$1,020	\$1,090	\$1,140	\$1,200	\$1,200	\$1,340	\$1,630	\$2,370	\$2,540	\$2,720	\$2,283,300
	PIPE	\$1,620	\$1,830	\$2,430	\$2,640	\$2,870	\$2,980	\$3,080	\$3,160	\$3,160	\$3,390	\$3,620	\$4,200	\$4,440	\$4,690	\$4,270,860
	TOTAL	\$2,130	\$2,410	\$3,160	\$3,510	\$3,890	\$4,070	\$4,220	\$4,360	\$4,360	\$4,730	\$5,250	\$6,570	\$6,980	\$7,410	\$6,554,160
BV	BASIN	\$950	\$1,080	\$1,360	\$1,620	\$1,900	\$2,030	\$2,140	\$2,240	\$2,240	\$2,510	\$3,050	\$4,430	\$4,750	\$5,090	\$1,365,640
	PIPE	\$2,280	\$2,580	\$3,430	\$3,720	\$4,040	\$4,200	\$4,340	\$4,450	\$4,450	\$4,770	\$5,090	\$5,910	\$6,260	\$6,600	\$2,697,520
	TOTAL	\$3,230	\$3,660	\$4,790	\$5,340	\$5,940	\$6,230	\$6,480	\$6,690	\$6,690	\$7,280	\$8,140	\$10,340	\$11,010	\$11,690	\$4,063,160
BW	BASIN	\$970	\$1,110	\$1,390	\$1,660	\$1,940	\$2,080	\$2,190	\$2,300	\$2,300	\$2,570	\$3,120	\$4,540	\$4,860	\$5,210	\$1,211,930
	PIPE	\$1,090	\$1,240	\$1,640	\$1,780	\$1,940	\$2,010	\$2,080	\$2,130	\$2,130	\$2,290	\$2,440	\$2,830	\$3,000	\$3,160	\$1,082,900
	TOTAL	\$2,060	\$2,350	\$3,030	\$3,440	\$3,880	\$4,090	\$4,270	\$4,430	\$4,430	\$4,860	\$5,560	\$7,370	\$7,860	\$8,370	\$2,294,830
BX	BASIN	\$2,130	\$2,130	\$2,670	\$3,200	\$3,740	\$4,000	\$4,210	\$4,410	\$4,410	\$4,930	\$6,000	\$8,730	\$9,350	\$10,020	\$7,690,715
	PIPE	\$2,660	\$2,660	\$3,530	\$3,840	\$4,160	\$4,330	\$4,470	\$4,590	\$4,590	\$4,920	\$5,250	\$6,090	\$6,450	\$6,800	\$8,068,477
	TOTAL	\$4,790	\$4,790	\$6,200	\$7,040	\$7,900	\$8,330	\$8,680	\$9,000	\$9,000	\$9,850	\$11,250	\$14,820	\$15,800	\$16,820	\$15,759,192
*Note: A surcharge fee is in effect per Board Resolution Nos. 2017-864 & 2018-908.																
BY1	BASIN	\$1,230	\$1,400	\$1,750	\$2,100	\$2,450	\$2,620	\$2,760	\$2,890	\$2,890	\$3,240	\$3,940	\$5,730	\$6,130	\$6,570	\$3,374,630
	PIPE	\$730	\$830	\$1,100	\$1,190	\$1,290	\$1,350	\$1,390	\$1,430	\$1,430	\$1,530	\$1,630	\$1,890	\$2,000	\$2,110	\$1,979,790
	TOTAL	\$1,960	\$2,230	\$2,850	\$3,290	\$3,740	\$3,970	\$4,150	\$4,320	\$4,320	\$4,770	\$5,570	\$7,620	\$8,130	\$8,680	\$5,354,420
BY2	BASIN	\$1,770	\$2,010	\$2,530	\$3,020	\$3,530	\$3,780	\$3,970	\$4,170	\$4,170	\$4,660	\$5,670	\$8,250	\$8,830	\$9,470	\$4,159,720
	PIPE	\$5,280	\$5,960	\$7,920	\$8,600	\$9,340	\$9,710	\$10,030	\$10,290	\$10,290	\$11,030	\$11,770	\$13,670	\$14,460	\$15,260	\$10,408,360
	TOTAL	\$7,050	\$7,970	\$10,450	\$11,620	\$12,870	\$13,490	\$14,000	\$14,460	\$14,460	\$15,690	\$17,440	\$21,920	\$23,290	\$24,730	\$14,568,080
BZ	BASIN	\$2,770	\$3,150	\$3,960	\$4,730	\$5,530	\$5,920	\$6,230	\$6,530	\$6,530	\$7,310	\$8,880	\$12,920	\$13,840	\$14,830	\$3,515,460
	PIPE	\$1,930	\$2,180	\$2,890	\$3,140	\$3,410	\$3,550	\$3,670	\$3,760	\$3,760	\$4,030	\$4,300	\$5,000	\$5,290	\$5,580	\$2,081,640
	TOTAL	\$4,700	\$5,330	\$6,850	\$7,870	\$8,940	\$9,470	\$9,900	\$10,290	\$10,290	\$11,340	\$13,180	\$17,920	\$19,130	\$20,410	\$5,597,100
CD	BASIN	\$2,240	\$2,560	\$3,210	\$3,840	\$4,490	\$4,800	\$5,050	\$5,300	\$5,300	\$5,930	\$7,210	\$10,480	\$11,220	\$12,030	\$3,508,750
	PIPE	\$4,090	\$4,620	\$6,130	\$6,660	\$7,240	\$7,520	\$7,770	\$7,970	\$7,970	\$8,540	\$9,120	\$10,590	\$11,200	\$11,810	\$4,927,970
	TOTAL	\$6,330	\$7,180	\$9,340	\$10,500	\$11,730	\$12,320	\$12,820	\$13,270	\$13,270	\$14,470	\$16,330	\$21,070	\$22,420	\$23,840	\$8,436,720
CE	BASIN	\$1,010	\$1,150	\$1,440	\$1,720	\$2,020	\$2,160	\$2,270	\$2,380	\$2,380	\$2,660	\$3,240	\$4,710	\$5,040	\$5,400	\$2,982,210
	PIPE	\$5,170	\$5,840	\$7,750	\$8,420	\$9,150	\$9,510	\$9,820	\$10,080	\$10,080	\$10,800	\$11,520	\$13,380	\$14,160	\$14,940	\$8,476,910
	TOTAL	\$6,180	\$6,990	\$9,190	\$10,140	\$11,170	\$11,670	\$12,090	\$12,460	\$12,460	\$13,460	\$14,760	\$18,090	\$19,200	\$20,340	\$11,459,120
CF	BASIN	\$820	\$930	\$1,170	\$1,400	\$1,640	\$1,750	\$1,840	\$1,930	\$1,930	\$2,160	\$2,630	\$3,820	\$4,090	\$4,390	\$2,522,470
	PIPE	\$4,620	\$5,220	\$6,930	\$7,530	\$8,180	\$8,500	\$8,780	\$9,010	\$9,010	\$9,660	\$10,300	\$11,970	\$12,660	\$13,350	\$7,892,630
	TOTAL	\$5,440	\$6,150	\$8,100	\$8,930	\$9,820	\$10,250	\$10,620	\$10,940	\$10,940	\$11,820	\$12,930	\$15,790	\$16,750	\$17,740	\$10,415,100
CG	BASIN	\$2,510	\$2,870	\$3,590	\$4,300	\$5,030	\$5,380	\$5,660	\$5,930	\$5,930	\$6,640	\$8,070	\$11,740	\$12,570	\$13,470	\$4,745,360
	PIPE	\$4,350	\$4,920	\$6,530	\$7,090	\$7,700	\$8,010	\$8,270	\$8,490	\$8,490	\$9,100	\$9,700	\$11,270	\$11,920	\$12,580	\$6,866,360
	TOTAL	\$6,860	\$7,790	\$10,120	\$11,390	\$12,730	\$13,390	\$13,930	\$14,420	\$14,420	\$15,740	\$17,770	\$23,010	\$24,490	\$26,050	\$11,611,720

**DRAINAGE FEE SCHEDULE FOR ZONE 1: PLANNED LOCAL DRAINAGE AREAS**

Area		AE-5, A-L, O	A1, A2, RR	R-1-E, R-1-EH, R-A	R-1-A, R-1-AH	R-1-B, R-1-C, RE	R-1 40%	R-1 45%	R-1 50%	R-2, M-H	R-3	R-4, T-P	M-1, M-2, M-3, C-R, M-1-P, S-L	C-P, C-M, R-P	C-1, C-2, C-3, C-4, C-5, C-6, C-L, P	Total Cost
CH	BASIN	\$1,780	\$2,030	\$2,540	\$3,040	\$3,550	\$3,800	\$4,000	\$4,190	\$4,190	\$4,690	\$5,700	\$8,300	\$8,880	\$9,520	\$3,446,470
	PIPE	\$5,440	\$6,150	\$8,160	\$8,870	\$9,630	\$10,010	\$10,340	\$10,610	\$10,610	\$11,370	\$12,130	\$14,090	\$14,910	\$15,720	\$8,860,650
	TOTAL	\$7,220	\$8,180	\$10,700	\$11,910	\$13,180	\$13,810	\$14,340	\$14,800	\$14,800	\$16,060	\$17,830	\$22,390	\$23,790	\$25,240	\$12,307,120
CI	BASIN	\$1,930	\$2,200	\$2,760	\$3,300	\$3,860	\$4,130	\$4,350	\$4,560	\$4,560	\$5,100	\$6,200	\$9,020	\$9,660	\$10,360	\$1,894,010
	PIPE	\$3,030	\$3,430	\$4,550	\$4,940	\$5,370	\$5,580	\$5,760	\$5,910	\$5,910	\$6,340	\$6,760	\$7,850	\$8,310	\$8,760	\$2,479,720
	TOTAL	\$4,960	\$5,630	\$7,310	\$8,240	\$9,230	\$9,710	\$10,110	\$10,470	\$10,470	\$11,440	\$12,960	\$16,870	\$17,970	\$19,120	\$4,373,730
CJ	BASIN	\$2,210	\$2,520	\$3,160	\$3,780	\$4,420	\$4,730	\$4,970	\$5,220	\$5,220	\$5,840	\$7,100	\$10,330	\$11,060	\$11,850	\$4,208,380
	PIPE	\$4,450	\$5,030	\$6,670	\$7,250	\$7,870	\$8,180	\$8,450	\$8,670	\$8,670	\$9,290	\$9,920	\$11,520	\$12,190	\$12,850	\$7,180,950
	TOTAL	\$6,660	\$7,550	\$9,830	\$11,030	\$12,290	\$12,910	\$13,420	\$13,890	\$13,890	\$15,130	\$17,020	\$21,850	\$23,250	\$24,700	\$11,389,330
CK	BASIN	\$2,030	\$2,320	\$2,910	\$3,480	\$4,070	\$4,350	\$4,570	\$4,800	\$4,800	\$5,370	\$6,530	\$9,490	\$10,160	\$10,900	\$3,160,550
	PIPE	\$4,150	\$4,690	\$6,220	\$6,760	\$7,340	\$7,630	\$7,880	\$8,090	\$8,090	\$8,670	\$9,250	\$10,740	\$11,360	\$11,990	\$5,459,420
	TOTAL	\$6,180	\$7,010	\$9,130	\$10,240	\$11,410	\$11,980	\$12,450	\$12,890	\$12,890	\$14,040	\$15,780	\$20,230	\$21,520	\$22,890	\$8,619,970
CL	BASIN	\$810	\$930	\$1,160	\$1,390	\$1,630	\$1,740	\$1,830	\$1,920	\$1,920	\$2,150	\$2,610	\$3,800	\$4,070	\$4,360	\$2,130,360
	PIPE	\$1,160	\$1,310	\$1,740	\$1,890	\$2,050	\$2,130	\$2,200	\$2,260	\$2,260	\$2,420	\$2,580	\$3,000	\$3,170	\$3,340	\$2,199,380
	TOTAL	\$1,970	\$2,240	\$2,900	\$3,280	\$3,680	\$3,870	\$4,030	\$4,180	\$4,180	\$4,570	\$5,190	\$6,800	\$7,240	\$7,700	\$4,329,740
CM	BASIN	\$340	\$390	\$490	\$590	\$680	\$730	\$770	\$810	\$810	\$900	\$1,100	\$1,600	\$1,710	\$1,840	\$895,340
	PIPE	\$730	\$820	\$1,090	\$1,190	\$1,290	\$1,340	\$1,380	\$1,420	\$1,420	\$1,520	\$1,620	\$1,880	\$1,990	\$2,100	\$1,246,080
	TOTAL	\$1,070	\$1,210	\$1,580	\$1,780	\$1,970	\$2,070	\$2,150	\$2,230	\$2,230	\$2,420	\$2,720	\$3,480	\$3,700	\$3,940	\$2,141,420
*Note: A surcharge fee is in effect per Board Resolution No.1228.																
CN	BASIN	\$190	\$220	\$280	\$330	\$390	\$410	\$430	\$460	\$460	\$510	\$620	\$900	\$960	\$1,030	\$636,150
	PIPE	\$880	\$990	\$1,320	\$1,430	\$1,550	\$1,620	\$1,670	\$1,710	\$1,710	\$1,840	\$1,960	\$2,270	\$2,410	\$2,540	\$1,808,510
	TOTAL	\$1,070	\$1,210	\$1,600	\$1,760	\$1,940	\$2,030	\$2,100	\$2,170	\$2,170	\$2,350	\$2,580	\$3,170	\$3,370	\$3,570	\$2,444,660
*Note: A surcharge fee is in effect per Board Resolution Nos. 1159, 1342, 1414, & 1422.																
CO1	BASIN	\$530	\$600	\$750	\$900	\$1,050	\$1,130	\$1,180	\$1,240	\$1,240	\$1,390	\$1,690	\$2,460	\$2,630	\$2,820	\$446,571
	PIPE	\$1,640	\$1,850	\$2,460	\$2,670	\$2,900	\$3,020	\$3,120	\$3,200	\$3,200	\$3,430	\$3,660	\$4,250	\$4,490	\$4,740	\$1,191,940
	TOTAL	\$2,170	\$2,450	\$3,210	\$3,570	\$3,950	\$4,150	\$4,300	\$4,440	\$4,440	\$4,820	\$5,350	\$6,710	\$7,120	\$7,560	\$1,638,511
CP	BASIN	\$3,160	\$3,610	\$4,530	\$5,410	\$6,330	\$6,770	\$7,120	\$7,470	\$7,470	\$8,350	\$10,160	\$14,780	\$15,820	\$16,960	\$2,456,470
	PIPE	\$5,140	\$5,810	\$7,710	\$8,380	\$9,100	\$9,460	\$9,760	\$10,020	\$10,020	\$10,740	\$11,460	\$13,310	\$14,080	\$14,850	\$3,169,700
	TOTAL	\$8,300	\$9,420	\$12,240	\$13,790	\$15,430	\$16,230	\$16,880	\$17,490	\$17,490	\$19,090	\$21,620	\$28,090	\$29,900	\$31,810	\$5,626,170
CQ	BASIN	\$2,670	\$3,050	\$3,830	\$4,570	\$5,350	\$5,720	\$6,020	\$6,310	\$6,310	\$7,060	\$8,590	\$12,490	\$13,370	\$14,340	\$2,841,790
	PIPE	\$3,880	\$4,380	\$5,820	\$6,320	\$6,860	\$7,130	\$7,370	\$7,560	\$7,560	\$8,100	\$8,650	\$10,040	\$10,620	\$11,210	\$3,088,990
	TOTAL	\$6,550	\$7,430	\$9,650	\$10,890	\$12,210	\$12,850	\$13,390	\$13,870	\$13,870	\$15,160	\$17,240	\$22,530	\$23,990	\$25,550	\$5,930,780
CS	BASIN	\$610	\$700	\$880	\$1,050	\$1,220	\$1,310	\$1,380	\$1,440	\$1,440	\$1,620	\$1,960	\$2,860	\$3,060	\$3,280	\$2,395,510
	PIPE	\$3,420	\$3,870	\$5,130	\$5,580	\$6,060	\$6,300	\$6,500	\$6,670	\$6,670	\$7,150	\$7,630	\$8,870	\$9,380	\$9,890	\$7,429,020
	TOTAL	\$4,030	\$4,570	\$6,010	\$6,630	\$7,280	\$7,610	\$7,880	\$8,110	\$8,110	\$8,770	\$9,590	\$11,730	\$12,440	\$13,170	\$9,824,530
CU	BASIN	\$1,580	\$1,800	\$2,260	\$2,710	\$3,160	\$3,390	\$3,560	\$3,730	\$3,730	\$4,180	\$5,080	\$7,390	\$7,910	\$8,480	\$2,329,720
	PIPE	\$2,930	\$3,320	\$4,400	\$4,780	\$5,190	\$5,400	\$5,570	\$5,720	\$5,720	\$6,130	\$6,540	\$7,600	\$8,040	\$8,480	\$2,395,910
	TOTAL	\$4,510	\$5,120	\$6,660	\$7,490	\$8,350	\$8,790	\$9,130	\$9,450	\$9,450	\$10,310	\$11,620	\$14,990	\$15,950	\$16,960	\$4,725,630
CV	BASIN	\$1,230	\$1,410	\$1,770	\$2,110	\$2,470	\$2,640	\$2,780	\$2,910	\$2,910	\$3,260	\$3,960	\$5,770	\$6,170	\$6,620	\$1,924,550
	PIPE	\$1,040	\$1,170	\$1,560	\$1,690	\$1,840	\$1,910	\$1,970	\$2,030	\$2,030	\$2,170	\$2,320	\$2,690	\$2,850	\$3,000	\$897,980
	TOTAL	\$2,270	\$2,580	\$3,330	\$3,800	\$4,310	\$4,550	\$4,750	\$4,940	\$4,940	\$5,430	\$6,280	\$8,460	\$9,020	\$9,620	\$2,822,530

**DRAINAGE FEE SCHEDULE FOR ZONE 1: PLANNED LOCAL DRAINAGE AREAS**

Area		AE-5, A-L, O	A1, A2, RR	R-1-E, R-1-EH, R-A	R-1-A, R-1-AH	R-1-B, R-1-C, RE	R-1 40%	R-1 45%	R-1 50%	R-2, M-H	R-3	R-4, T-P	M-1, M-2, M-3, C-R, M-1-P, S-L	C-P, C-M, R-P	C-1, C-2, C-3, C-4, C-5, C-6, C-L, P	Total Cost
CW	BASIN	\$650	\$740	\$930	\$1,110	\$1,290	\$1,390	\$1,460	\$1,530	\$1,530	\$1,710	\$2,080	\$3,020	\$3,240	\$3,470	\$1,601,660
	PIPE	\$600	\$670	\$890	\$970	\$1,050	\$1,100	\$1,130	\$1,160	\$1,160	\$1,240	\$1,330	\$1,540	\$1,630	\$1,720	\$1,004,420
	TOTAL	\$1,250	\$1,410	\$1,820	\$2,080	\$2,340	\$2,490	\$2,590	\$2,690	\$2,690	\$2,950	\$3,410	\$4,560	\$4,870	\$5,190	\$2,606,080
CX	BASIN	\$750	\$850	\$1,070	\$1,280	\$1,500	\$1,600	\$1,690	\$1,770	\$1,770	\$1,980	\$2,400	\$3,500	\$3,750	\$4,020	\$1,327,077
	PIPE	\$1,190	\$1,350	\$1,790	\$1,940	\$2,110	\$2,190	\$2,260	\$2,320	\$2,320	\$2,490	\$2,660	\$3,090	\$3,270	\$3,440	\$1,744,171
	TOTAL	\$1,940	\$2,200	\$2,860	\$3,220	\$3,610	\$3,790	\$3,950	\$4,090	\$4,090	\$4,470	\$5,060	\$6,590	\$7,020	\$7,460	\$3,071,248
CY	BASIN	\$760	\$860	\$1,080	\$1,290	\$1,510	\$1,620	\$1,700	\$1,780	\$1,780	\$1,990	\$2,420	\$3,530	\$3,780	\$4,050	\$1,160,910
	PIPE	\$1,000	\$1,130	\$1,500	\$1,630	\$1,770	\$1,840	\$1,900	\$1,950	\$1,950	\$2,090	\$2,230	\$2,590	\$2,740	\$2,890	\$1,211,940
	TOTAL	\$1,760	\$1,990	\$2,580	\$2,920	\$3,280	\$3,460	\$3,600	\$3,730	\$3,730	\$4,080	\$4,650	\$6,120	\$6,520	\$6,940	\$2,372,850
CZ	BASIN	\$540	\$620	\$780	\$930	\$1,090	\$1,170	\$1,230	\$1,290	\$1,290	\$1,440	\$1,750	\$2,540	\$2,720	\$2,920	\$1,504,630
	PIPE	\$1,220	\$1,380	\$1,830	\$1,990	\$2,160	\$2,240	\$2,320	\$2,380	\$2,380	\$2,550	\$2,720	\$3,160	\$3,340	\$3,520	\$2,705,940
	TOTAL	\$1,760	\$2,000	\$2,610	\$2,920	\$3,250	\$3,410	\$3,550	\$3,670	\$3,670	\$3,990	\$4,470	\$5,700	\$6,060	\$6,440	\$4,210,570
DE	BASIN	\$1,510	\$1,730	\$2,160	\$2,590	\$3,030	\$3,240	\$3,410	\$3,570	\$3,570	\$4,000	\$4,860	\$7,070	\$7,570	\$8,110	\$2,975,210
	PIPE	\$2,100	\$2,380	\$3,160	\$3,430	\$3,720	\$3,870	\$4,000	\$4,100	\$4,100	\$4,400	\$4,690	\$5,450	\$5,760	\$6,080	\$3,301,150
	TOTAL	\$3,610	\$4,110	\$5,320	\$6,020	\$6,750	\$7,110	\$7,410	\$7,670	\$7,670	\$8,400	\$9,550	\$12,520	\$13,330	\$14,190	\$6,276,360
*Note: A surcharge fee is in effect per Board Resolution No. 2006-486.																
DF	BASIN	\$570	\$650	\$820	\$970	\$1,140	\$1,220	\$1,280	\$1,350	\$1,350	\$1,510	\$1,830	\$2,660	\$2,850	\$3,060	\$165,172
	PIPE	\$1,070	\$1,210	\$1,610	\$1,750	\$1,900	\$1,970	\$2,040	\$2,090	\$2,090	\$2,240	\$2,390	\$2,780	\$2,940	\$3,100	\$283,883
	TOTAL	\$1,640	\$1,860	\$2,430	\$2,720	\$3,040	\$3,190	\$3,320	\$3,440	\$3,440	\$3,750	\$4,220	\$5,440	\$5,790	\$6,160	\$449,055
DG	BASIN	\$720	\$830	\$1,040	\$1,240	\$1,450	\$1,550	\$1,630	\$1,710	\$1,710	\$1,910	\$2,320	\$3,380	\$3,620	\$3,880	\$447,419
	PIPE	\$1,260	\$1,430	\$1,900	\$2,060	\$2,240	\$2,320	\$2,400	\$2,460	\$2,460	\$2,640	\$2,820	\$3,270	\$3,460	\$3,650	\$720,114
	TOTAL	\$1,980	\$2,260	\$2,940	\$3,300	\$3,690	\$3,870	\$4,030	\$4,170	\$4,170	\$4,550	\$5,140	\$6,650	\$7,080	\$7,530	\$1,167,533
DH	BASIN	\$860	\$980	\$1,230	\$1,470	\$1,720	\$1,840	\$1,930	\$2,030	\$2,030	\$2,270	\$2,760	\$4,010	\$4,290	\$4,600	\$1,590,510
	PIPE	\$960	\$1,080	\$1,440	\$1,560	\$1,690	\$1,760	\$1,820	\$1,870	\$1,870	\$2,000	\$2,130	\$2,480	\$2,620	\$2,770	\$1,109,580
	TOTAL	\$1,820	\$2,060	\$2,670	\$3,030	\$3,410	\$3,600	\$3,750	\$3,900	\$3,900	\$4,270	\$4,890	\$6,490	\$6,910	\$7,370	\$2,700,090
DI	BASIN	\$460	\$520	\$650	\$780	\$920	\$980	\$1,030	\$1,080	\$1,080	\$1,210	\$1,470	\$2,140	\$2,290	\$2,450	\$219,705
	PIPE	\$750	\$850	\$1,120	\$1,220	\$1,330	\$1,380	\$1,420	\$1,460	\$1,460	\$1,570	\$1,670	\$1,940	\$2,050	\$2,170	\$326,191
	TOTAL	\$1,210	\$1,370	\$1,770	\$2,000	\$2,250	\$2,360	\$2,450	\$2,540	\$2,540	\$2,780	\$3,140	\$4,080	\$4,340	\$4,620	\$545,896
DK	BASIN	\$210	\$240	\$300	\$350	\$410	\$440	\$460	\$490	\$490	\$550	\$660	\$960	\$1,030	\$1,110	\$955,890
	PIPE	\$1,540	\$1,740	\$2,310	\$2,510	\$2,720	\$2,830	\$2,920	\$3,000	\$3,000	\$3,220	\$3,430	\$3,980	\$4,210	\$4,450	\$5,978,360
	TOTAL	\$1,750	\$1,980	\$2,610	\$2,860	\$3,130	\$3,270	\$3,380	\$3,490	\$3,490	\$3,770	\$4,090	\$4,940	\$5,240	\$5,560	\$6,934,250
DL	BASIN	\$2,550	\$2,910	\$3,650	\$4,360	\$5,100	\$5,460	\$5,740	\$6,020	\$6,020	\$6,730	\$8,190	\$11,910	\$12,750	\$13,670	\$2,971,630
	PIPE	\$3,580	\$4,040	\$5,370	\$5,830	\$6,330	\$6,580	\$6,800	\$6,980	\$6,980	\$7,480	\$7,980	\$9,270	\$9,800	\$10,340	\$2,929,340
	TOTAL	\$6,130	\$6,950	\$9,020	\$10,190	\$11,430	\$12,040	\$12,540	\$13,000	\$13,000	\$14,210	\$16,170	\$21,180	\$22,550	\$24,010	\$5,900,970
DM	BASIN	\$1,910	\$2,180	\$2,730	\$3,270	\$3,820	\$4,090	\$4,300	\$4,510	\$4,510	\$5,050	\$6,140	\$8,930	\$9,560	\$10,250	\$4,679,720
	PIPE	\$4,920	\$5,560	\$7,380	\$8,020	\$8,710	\$9,060	\$9,350	\$9,600	\$9,600	\$10,290	\$10,970	\$12,750	\$13,480	\$14,220	\$9,933,490
	TOTAL	\$6,830	\$7,740	\$10,110	\$11,290	\$12,530	\$13,150	\$13,650	\$14,110	\$14,110	\$15,340	\$17,110	\$21,680	\$23,040	\$24,470	\$14,613,210
DN	BASIN	\$2,500	\$2,860	\$3,580	\$4,280	\$5,010	\$5,360	\$5,630	\$5,910	\$5,910	\$6,610	\$8,040	\$11,700	\$12,520	\$13,420	\$5,518,480
	PIPE	\$3,610	\$4,080	\$5,420	\$5,890	\$6,400	\$6,650	\$6,870	\$7,050	\$7,050	\$7,560	\$8,060	\$9,360	\$9,900	\$10,450	\$6,767,650
	TOTAL	\$6,110	\$6,940	\$9,000	\$10,170	\$11,410	\$12,010	\$12,500	\$12,960	\$12,960	\$14,170	\$16,100	\$21,060	\$22,420	\$23,870	\$12,286,130
*Note: A surcharge fee is in effect per Board Resolution Nos. 2016-840 & 2018-908.																



**DRAINAGE FEE SCHEDULE FOR ZONE 1: PLANNED LOCAL DRAINAGE AREAS**

Area		AE-5, A-L, O	A1, A2, RR	R-1-E, R-1-EH, R-A	R-1-A, R-1-AH	R-1-B, R-1-C, RE	R-1 40%	R-1 45%	R-1 50%	R-2, M-H	R-3	R-4, T-P	M-1, M-2, M-3, C-R, M-1-P, S-L	C-P, C-M, R-P	C-1, C-2, C-3, C-4, C-5, C-6, C-L, P	Total Cost
DO	BASIN	\$1,880	\$2,150	\$2,690	\$3,220	\$3,760	\$4,030	\$4,230	\$4,440	\$4,440	\$4,970	\$6,040	\$8,790	\$9,410	\$10,090	\$5,738,770
	PIPE	\$2,690	\$3,040	\$4,040	\$4,390	\$4,760	\$4,950	\$5,110	\$5,250	\$5,250	\$5,620	\$6,000	\$6,970	\$7,370	\$7,780	\$6,373,400
	TOTAL	\$4,570	\$5,190	\$6,730	\$7,610	\$8,520	\$8,980	\$9,340	\$9,690	\$9,690	\$10,590	\$12,040	\$15,760	\$16,780	\$17,870	\$12,112,170
*Note: A surcharge fee is in effect per Board Resolution Nos. 2007-522, 2014-806, 2018-887, 2018-908, & 2020-959.																
DP	BASIN	\$1,660	\$1,890	\$2,370	\$2,840	\$3,320	\$3,550	\$3,730	\$3,910	\$3,910	\$4,380	\$5,320	\$7,740	\$8,290	\$8,890	\$6,192,550
	PIPE	\$5,080	\$5,740	\$7,620	\$8,280	\$8,990	\$9,350	\$9,660	\$9,910	\$9,910	\$10,620	\$11,330	\$13,160	\$13,920	\$14,690	\$14,133,450
	TOTAL	\$6,740	\$7,630	\$9,990	\$11,120	\$12,310	\$12,900	\$13,390	\$13,820	\$13,820	\$15,000	\$16,650	\$20,900	\$22,210	\$23,580	\$20,326,000
DQ	BASIN	\$5,990	\$6,830	\$8,560	\$10,240	\$11,980	\$12,820	\$13,480	\$14,130	\$14,130	\$15,810	\$19,220	\$27,970	\$29,950	\$32,100	\$4,900,200
	PIPE	\$4,390	\$4,960	\$6,590	\$7,160	\$7,770	\$8,080	\$8,350	\$8,570	\$8,570	\$9,180	\$9,800	\$11,380	\$12,040	\$12,690	\$3,104,600
	TOTAL	\$10,380	\$11,790	\$15,150	\$17,400	\$19,750	\$20,900	\$21,830	\$22,700	\$22,700	\$24,990	\$29,020	\$39,350	\$41,990	\$44,790	\$8,004,800
DS	BASIN	\$2,400	\$2,730	\$3,430	\$4,100	\$4,790	\$5,130	\$5,390	\$5,660	\$5,660	\$6,330	\$7,690	\$11,190	\$11,980	\$12,850	\$10,381,470
	PIPE	\$4,650	\$5,260	\$6,980	\$7,580	\$8,230	\$8,560	\$8,840	\$9,070	\$9,070	\$9,720	\$10,370	\$12,050	\$12,740	\$13,440	\$16,271,730
	TOTAL	\$7,050	\$7,990	\$10,410	\$11,680	\$13,020	\$13,690	\$14,230	\$14,730	\$14,730	\$16,050	\$18,060	\$23,240	\$24,720	\$26,290	\$26,653,200
DV	BASIN	\$660	\$750	\$940	\$1,130	\$1,320	\$1,410	\$1,480	\$1,550	\$1,550	\$1,740	\$2,110	\$3,080	\$3,290	\$3,530	\$1,366,100
	PIPE	\$5,330	\$6,030	\$8,000	\$8,700	\$9,440	\$9,820	\$10,140	\$10,400	\$10,400	\$11,150	\$11,900	\$13,820	\$14,620	\$15,420	\$6,453,350
	TOTAL	\$5,990	\$6,780	\$8,940	\$9,830	\$10,760	\$11,230	\$11,620	\$11,950	\$11,950	\$12,890	\$14,010	\$16,900	\$17,910	\$18,950	\$7,819,450
EF	BASIN	\$1,470	\$1,680	\$2,100	\$2,520	\$2,940	\$3,150	\$3,310	\$3,470	\$3,470	\$3,880	\$4,720	\$6,870	\$7,360	\$7,890	\$2,964,070
	PIPE	\$810	\$920	\$1,220	\$1,320	\$1,430	\$1,490	\$1,540	\$1,580	\$1,580	\$1,690	\$1,810	\$2,100	\$2,220	\$2,340	\$1,284,910
	TOTAL	\$2,280	\$2,600	\$3,320	\$3,840	\$4,370	\$4,640	\$4,850	\$5,050	\$5,050	\$5,570	\$6,530	\$8,970	\$9,580	\$10,230	\$4,248,980
EG	BASIN	\$900	\$1,020	\$1,280	\$1,530	\$1,790	\$1,920	\$2,010	\$2,110	\$2,110	\$2,360	\$2,870	\$4,180	\$4,480	\$4,800	\$2,119,330
	PIPE	\$1,770	\$2,000	\$2,650	\$2,880	\$3,130	\$3,260	\$3,360	\$3,450	\$3,450	\$3,700	\$3,950	\$4,580	\$4,850	\$5,110	\$3,129,180
	TOTAL	\$2,670	\$3,020	\$3,930	\$4,410	\$4,920	\$5,180	\$5,370	\$5,560	\$5,560	\$6,060	\$6,820	\$8,760	\$9,330	\$9,910	\$5,248,510
EH	BASIN	\$1,060	\$1,210	\$1,520	\$1,810	\$2,120	\$2,270	\$2,380	\$2,500	\$2,500	\$2,800	\$3,400	\$4,950	\$5,300	\$5,680	\$3,283,480
	PIPE	\$2,740	\$3,100	\$4,110	\$4,470	\$4,850	\$5,040	\$5,210	\$5,350	\$5,350	\$5,730	\$6,110	\$7,100	\$7,510	\$7,920	\$5,378,100
	TOTAL	\$3,800	\$4,310	\$5,630	\$6,280	\$6,970	\$7,310	\$7,590	\$7,850	\$7,850	\$8,530	\$9,510	\$12,050	\$12,810	\$13,600	\$8,661,580
EI	BASIN	\$3,000	\$3,420	\$4,290	\$5,130	\$6,000	\$6,420	\$6,750	\$7,080	\$7,080	\$7,920	\$9,630	\$14,010	\$15,000	\$16,080	\$2,498,790
	PIPE	\$2,280	\$2,570	\$3,410	\$3,710	\$4,030	\$4,190	\$4,320	\$4,440	\$4,440	\$4,760	\$5,070	\$5,890	\$6,230	\$6,580	\$1,126,870
	TOTAL	\$5,280	\$5,990	\$7,700	\$8,840	\$10,030	\$10,610	\$11,070	\$11,520	\$11,520	\$12,680	\$14,700	\$19,900	\$21,230	\$22,660	\$3,625,660
EJ	BASIN	\$3,520	\$4,010	\$5,030	\$6,010	\$7,030	\$7,520	\$7,910	\$8,300	\$8,300	\$9,280	\$11,280	\$16,420	\$17,580	\$18,840	\$3,580,410
	PIPE	\$3,820	\$4,320	\$5,730	\$6,230	\$6,760	\$7,030	\$7,260	\$7,450	\$7,450	\$7,990	\$8,520	\$9,900	\$10,470	\$11,040	\$3,361,130
	TOTAL	\$7,340	\$8,330	\$10,760	\$12,240	\$13,790	\$14,550	\$15,170	\$15,750	\$15,750	\$17,270	\$19,800	\$26,320	\$28,050	\$29,880	\$6,941,540
EK	BASIN	\$400	\$450	\$570	\$680	\$800	\$850	\$890	\$940	\$940	\$1,050	\$1,280	\$1,860	\$1,990	\$2,130	\$632,917
	PIPE	\$1,780	\$2,010	\$2,670	\$2,900	\$3,150	\$3,280	\$3,380	\$3,470	\$3,470	\$3,720	\$3,970	\$4,610	\$4,880	\$5,150	\$2,364,726
	TOTAL	\$2,180	\$2,460	\$3,240	\$3,580	\$3,950	\$4,130	\$4,270	\$4,410	\$4,410	\$4,770	\$5,250	\$6,470	\$6,870	\$7,280	\$2,997,643
EL	BASIN	\$1,920	\$2,180	\$2,740	\$3,280	\$3,830	\$4,100	\$4,310	\$4,520	\$4,520	\$5,060	\$6,150	\$8,940	\$9,580	\$10,270	\$924,060
	PIPE	\$1,490	\$1,680	\$2,230	\$2,430	\$2,640	\$2,740	\$2,830	\$2,900	\$2,900	\$3,110	\$3,320	\$3,860	\$4,080	\$4,300	\$398,470
	TOTAL	\$3,410	\$3,860	\$4,970	\$5,710	\$6,470	\$6,840	\$7,140	\$7,420	\$7,420	\$8,170	\$9,470	\$12,800	\$13,660	\$14,570	\$1,322,530
EM	BASIN	\$1,830	\$2,090	\$2,620	\$3,130	\$3,660	\$3,920	\$4,120	\$4,320	\$4,320	\$4,830	\$5,880	\$8,550	\$9,160	\$9,810	\$2,377,350
	PIPE	\$2,860	\$3,230	\$4,290	\$4,660	\$5,060	\$5,260	\$5,430	\$5,580	\$5,580	\$5,980	\$6,380	\$7,410	\$7,840	\$8,270	\$2,866,840
	TOTAL	\$4,690	\$5,320	\$6,910	\$7,790	\$8,720	\$9,180	\$9,550	\$9,900	\$9,900	\$10,810	\$12,260	\$15,960	\$17,000	\$18,080	\$5,244,190

**DRAINAGE FEE SCHEDULE FOR ZONE 1: PLANNED LOCAL DRAINAGE AREAS**

Area		AE-5, A-L, O	A1, A2, RR	R-1-E, R-1-EH, R-A	R-1-A, R-1-AH	R-1-B, R-1-C, RE	R-1 40%	R-1 45%	R-1 50%	R-2, M-H	R-3	R-4, T-P	M-1, M-2, M-3, C-R, M-1-P, S-L	C-P, C-M, R-P	C-1, C-2, C-3, C-4, C-5, C-6, C-L, P	Total Cost
EN	BASIN	\$1,630	\$1,860	\$2,340	\$2,790	\$3,270	\$3,500	\$3,680	\$3,860	\$3,860	\$4,310	\$5,250	\$7,630	\$8,170	\$8,760	\$3,064,400
	PIPE	\$4,880	\$5,510	\$7,310	\$7,950	\$8,630	\$8,970	\$9,260	\$9,510	\$9,510	\$10,190	\$10,870	\$12,630	\$13,360	\$14,090	\$6,395,320
	TOTAL	\$6,510	\$7,370	\$9,650	\$10,740	\$11,900	\$12,470	\$12,940	\$13,370	\$13,370	\$14,500	\$16,120	\$20,260	\$21,530	\$22,850	\$9,459,720
EO	BASIN	\$2,710	\$3,090	\$3,880	\$4,640	\$5,420	\$5,800	\$6,100	\$6,400	\$6,400	\$7,160	\$8,710	\$12,670	\$13,560	\$14,540	\$4,512,860
	PIPE	\$2,350	\$2,660	\$3,530	\$3,830	\$4,160	\$4,330	\$4,470	\$4,590	\$4,590	\$4,910	\$5,240	\$6,090	\$6,440	\$6,800	\$3,256,670
	TOTAL	\$5,060	\$5,750	\$7,410	\$8,470	\$9,580	\$10,130	\$10,570	\$10,990	\$10,990	\$12,070	\$13,950	\$18,760	\$20,000	\$21,340	\$7,769,530
NN	BASIN	\$1,490	\$1,700	\$2,130	\$2,550	\$2,980	\$3,190	\$3,350	\$3,520	\$3,520	\$3,940	\$4,790	\$6,960	\$7,450	\$7,990	\$3,743,500
	PIPE	\$3,330	\$3,770	\$5,000	\$5,440	\$5,900	\$6,140	\$6,340	\$6,500	\$6,500	\$6,970	\$7,440	\$8,640	\$9,140	\$9,640	\$6,496,160
	TOTAL	\$4,820	\$5,470	\$7,130	\$7,990	\$8,880	\$9,330	\$9,690	\$10,020	\$10,020	\$10,910	\$12,230	\$15,600	\$16,590	\$17,630	\$10,239,660
1G	BASIN	\$1,330	\$1,330	\$1,670	\$1,990	\$2,330	\$2,500	\$2,620	\$2,750	\$2,750	\$3,080	\$3,740	\$5,450	\$5,830	\$6,250	\$1,660,870
	PIPE	\$1,380	\$1,380	\$1,830	\$1,980	\$2,150	\$2,240	\$2,310	\$2,370	\$2,370	\$2,540	\$2,710	\$3,150	\$3,330	\$3,520	\$1,541,159
	TOTAL	\$2,710	\$2,710	\$3,500	\$3,970	\$4,480	\$4,740	\$4,930	\$5,120	\$5,120	\$5,620	\$6,450	\$8,600	\$9,160	\$9,770	\$3,202,029
3G	BASIN	\$2,130	\$2,430	\$3,050	\$3,650	\$4,270	\$4,560	\$4,800	\$5,030	\$5,030	\$5,630	\$6,850	\$9,960	\$10,670	\$11,430	\$4,649,160
	PIPE	\$2,260	\$2,560	\$3,390	\$3,690	\$4,010	\$4,160	\$4,300	\$4,410	\$4,410	\$4,730	\$5,050	\$5,860	\$6,200	\$6,540	\$4,154,740
	TOTAL	\$4,390	\$4,990	\$6,440	\$7,340	\$8,280	\$8,720	\$9,100	\$9,440	\$9,440	\$10,360	\$11,900	\$15,820	\$16,870	\$17,970	\$8,803,900
7C	BASIN	\$1,810	\$1,810	\$2,260	\$2,710	\$3,170	\$3,390	\$3,560	\$3,740	\$3,740	\$4,180	\$5,080	\$7,400	\$7,920	\$8,490	\$3,220,892
	PIPE	\$1,820	\$1,820	\$2,410	\$2,620	\$2,850	\$2,960	\$3,060	\$3,140	\$3,140	\$3,360	\$3,590	\$4,170	\$4,410	\$4,650	\$2,323,081
	TOTAL	\$3,630	\$3,630	\$4,670	\$5,330	\$6,020	\$6,350	\$6,620	\$6,880	\$6,880	\$7,540	\$8,670	\$11,570	\$12,330	\$13,140	\$5,543,973
7D	BASIN	\$2,020	\$2,310	\$2,890	\$3,460	\$4,050	\$4,330	\$4,550	\$4,770	\$4,770	\$5,340	\$6,490	\$9,450	\$10,120	\$10,840	\$3,547,180
	PIPE	\$1,760	\$1,990	\$2,640	\$2,870	\$3,110	\$3,230	\$3,340	\$3,430	\$3,430	\$3,670	\$3,920	\$4,550	\$4,820	\$5,080	\$2,133,030
	TOTAL	\$3,780	\$4,300	\$5,530	\$6,330	\$7,160	\$7,560	\$7,890	\$8,200	\$8,200	\$9,010	\$10,410	\$14,000	\$14,940	\$15,920	\$5,680,210
*Note: A surcharge fee is in effect per Board Resolution Nos. 2005-480 & 2018-908.																
7H	BASIN	\$2,040	\$2,320	\$2,910	\$3,480	\$4,070	\$4,360	\$4,580	\$4,800	\$4,800	\$5,370	\$6,530	\$9,500	\$10,180	\$10,910	\$4,614,570
	PIPE	\$3,620	\$4,090	\$5,430	\$5,900	\$6,410	\$6,660	\$6,880	\$7,060	\$7,060	\$7,570	\$8,080	\$9,380	\$9,920	\$10,470	\$5,814,880
	TOTAL	\$5,660	\$6,410	\$8,340	\$9,380	\$10,480	\$11,020	\$11,460	\$11,860	\$11,860	\$12,940	\$14,610	\$18,880	\$20,100	\$21,380	\$10,429,450
*Note: A surcharge fee is in effect per Board Resolution Nos. 2005-480 & 2018-908.																

**DRAINAGE FEE SCHEDULE FOR ZONE 2: PLANNED LOCAL DRAINAGE AREAS**

Area	AE-5, A-L, O	A1, A2, RR	R-1-E, R-1-EH, R-A	R-1-A, R-1-AH	R-1-B, R-1-C, RE	R-1 40%	R-1 45%	R-1 50%	R-2, M-H	R-3	R-4, T-P	M-1, M-2, M-3, C-R, M-1-P, S-L	C-P, C-M, R-P	C-1, C-2, C-3, C-4, C-5, C-6, C-L, P	Total Cost
<b>Zone 2</b> BASIN	\$710	\$810	\$1,010	\$1,210	\$1,410	\$1,510	\$1,590	\$1,670	\$1,670	\$1,870	\$2,270	\$3,300	\$3,530	\$3,790	\$79,605,018
PIPE	\$1,530	\$1,730	\$2,300	\$2,490	\$2,710	\$2,820	\$2,910	\$2,980	\$2,980	\$3,200	\$3,410	\$3,960	\$4,190	\$4,420	\$120,942,404
<b>TOTAL</b>	<b>\$2,240</b>	<b>\$2,540</b>	<b>\$3,310</b>	<b>\$3,700</b>	<b>\$4,120</b>	<b>\$4,330</b>	<b>\$4,500</b>	<b>\$4,650</b>	<b>\$4,650</b>	<b>\$5,070</b>	<b>\$5,680</b>	<b>\$7,260</b>	<b>\$7,720</b>	<b>\$8,210</b>	<b>\$200,547,422</b>

**Planned Local Drianage Areas: Zone 2**

Area	Basin Cost	Pipe Cost	Total	Area	Basin Cost	Pipe Cost	Total	Area	Basin Cost	Pipe Cost	Total
A	\$2,202,851	\$1,316,582	<b>\$3,519,433</b>	X	\$1,717,823	\$448,103	<b>\$2,165,926</b>	OO	\$2,060,127	\$754,900	<b>\$2,815,027</b>
B	\$982,476	\$142,170	<b>\$1,124,646</b>	Y	\$1,132,068	\$2,262,773	<b>\$3,394,841</b>	PP	\$1,625,135	\$1,217,957	<b>\$2,843,092</b>
C	\$479,953	\$317,414	<b>\$797,367</b>	Z	\$1,121,879	\$2,523,279	<b>\$3,645,158 **</b>	RR	\$4,998,735	\$17,955,076	<b>\$22,953,811</b>
D	\$801,395	\$694,153	<b>\$1,495,548</b>	AA	\$976,454	\$1,241,714	<b>\$2,218,168</b>	SS	\$2,245,208	\$2,551,192	<b>\$4,796,400</b>
E	\$747,392	\$228,063	<b>\$975,455</b>	BB	\$487,097	\$822,774	<b>\$1,309,871</b>	TT	\$1,777,933	\$1,507,214	<b>\$3,285,147</b>
F	\$272,523	\$302,016	<b>\$574,539</b>	CC	\$518,778	\$2,084,691	<b>\$2,603,469</b>	UU1	\$474,282	\$919,840	<b>\$1,394,122</b>
G	\$1,141,796	\$157,007	<b>\$1,298,803</b>	CO2	\$892,058	\$1,424,260	<b>\$2,316,318</b>	UU2	\$1,458,495	\$1,686,286	<b>\$3,144,781</b>
H	\$99,858	\$214,682	<b>\$314,540</b>	DD	\$1,833,060	\$7,704,370	<b>\$9,537,430</b>	UU3	\$3,005,594	\$8,102,226	<b>\$11,107,820</b>
I	\$227,828	\$248,025	<b>\$475,853</b>	EE	\$754,118	\$3,353,355	<b>\$4,107,473</b>	VV	\$34,124	\$116,961	<b>\$151,085</b>
J	\$1,634,773	\$376,115	<b>\$2,010,888</b>	FF	\$1,433,799	\$9,519,735	<b>\$10,953,534</b>	WW	\$18,653	\$360,044	<b>\$378,697</b>
K	\$985,172	\$674,818	<b>\$1,659,990</b>	GG	\$2,285,718	\$1,446,392	<b>\$3,732,110</b>	XX	\$1,025,092	\$2,132,726	<b>\$3,157,818</b>
L	\$633,035	\$494,850	<b>\$1,127,885</b>	HH	\$3,952,602	\$4,941,398	<b>\$8,894,000</b>	ZZ	\$2,442,162	\$2,535,950	<b>\$4,978,112</b>
M	\$967,464	\$255,974	<b>\$1,223,438</b>	II1	\$4,491,616	\$16,095,792	<b>\$20,587,408</b>				
N	\$462,283	\$437,888	<b>\$900,171</b>	II2	\$7,587,542	\$1,269,885	<b>\$8,857,427</b>				
O	\$986,910	\$190,138	<b>\$1,177,048</b>	II3	\$1,661,538	\$1,465,005	<b>\$3,126,543</b>				
P	\$835,552	\$277,552	<b>\$1,113,104</b>	II4	\$2,071,813	\$1,113,110	<b>\$3,184,923</b>				
T	\$1,706,427	\$2,127,357	<b>\$3,833,784</b>	JJ	\$1,868,936	\$3,844,665	<b>\$5,713,601</b>				
U	\$1,327,425	\$668,375	<b>\$1,995,800</b>	KK	\$1,824,753	\$1,527,562	<b>\$3,352,315</b>				
V	\$648,023	\$1,726,395	<b>\$2,374,418</b>	LL	\$2,071,187	\$3,070,127	<b>\$5,141,314</b>				
W	\$2,058,214	\$3,144,362	<b>\$5,202,576 *</b>	MM	\$555,289	\$949,106	<b>\$1,504,395</b>				

W \* Note: A surcharge fee is in effect per Board Resolution No. 885-BPBR.  
 Z \*\* Note: A surcharge fee is in effect per Board Resolution Nos. 1227, 1265, 1268, 1386.

**DRAINAGE FEE SCHEDULE FOR ZONE 3: PLANNED LOCAL DRAINAGE AREAS**

Area	AE-5, A-L, O	A1, A2, RR	R-1-E, R-1-EH, R-A	R-1-A, R-1-AH	R-1-B, R-1-C, RE	R-1 40%	R-1 45%	R-1 50%	R-2, M-H	R-3	R-4, T-P	M-1, M-2, M-3, C-R, M-1-P, S-L	C-P, C-M, R-P	C-1, C-2, C-3, C-4, C-5, C-6, C-L, P	Total Cost
<b>Zone 3</b>															
BASIN	\$1,350	\$1,530	\$1,920	\$2,300	\$2,690	\$2,880	\$3,030	\$3,180	\$3,180	\$3,550	\$4,320	\$6,280	\$6,730	\$7,210	\$24,837,792
PIPE	\$1,480	\$1,680	\$2,230	\$2,420	\$2,630	\$2,730	\$2,820	\$2,890	\$2,890	\$3,100	\$3,310	\$3,840	\$4,060	\$4,290	\$19,594,270
<b>TOTAL</b>	<b>\$2,830</b>	<b>\$3,210</b>	<b>\$4,150</b>	<b>\$4,720</b>	<b>\$5,320</b>	<b>\$5,610</b>	<b>\$5,850</b>	<b>\$6,070</b>	<b>\$6,070</b>	<b>\$6,650</b>	<b>\$7,630</b>	<b>\$10,120</b>	<b>\$10,790</b>	<b>\$11,500</b>	<b>\$44,432,062</b>

**Planned Local Drianage Areas: Zone 3**

Area	Basin Cost	Pipe Cost	Total
Q	\$381,015	\$411,805	<b>\$792,820</b>
S	\$1,306,359	\$2,237,246	<b>\$3,543,605</b>
1E	\$2,036,329	\$920,107	<b>\$2,956,436</b>
2D	\$806,960	\$1,278,863	<b>\$2,085,823</b>
3A	\$1,246,423	\$831,608	<b>\$2,078,031</b>
3D	\$1,398,783	\$1,032,196	<b>\$2,430,979</b>
3F	\$1,080,072	\$1,224,524	<b>\$2,304,596</b>
4B	\$1,370,562	\$904,730	<b>\$2,275,292</b>
4C	\$1,132,175	\$2,383,951	<b>\$3,516,126</b>
4D	\$3,574,465	\$929,777	<b>\$4,504,242</b>
4E	\$3,326,038	\$2,136,302	<b>\$5,462,340</b>
5B/5C	\$4,201,521	\$2,185,870	<b>\$6,387,391</b>
5F	\$1,544,804	\$1,530,399	<b>\$3,075,203</b>
6D	\$1,432,286	\$1,586,892	<b>\$3,019,178</b>

**DRAINAGE FEE SCHEDULE FOR SURCHARGE AREAS: PLANNED LOCAL DRAINAGE AREAS**

Area	AE-5, A-L, O	A1, A2, RR	R-1-E, R-1-EH, R-A	R-1-A, R-1-AH	R-1-B, R-1-C, RE	R-1 40%	R-1 45%	R-1 50%	R-2, M-H	R-3	R-4, T-P	M-1, M-2, M-3, C-R, M-1-P, S-L	C-P, C-M, R-P	C-1, C-2, C-3, C-4, C-5, C-6, C-L, P	
<b>W</b>	TOTAL	-	-	-	-	-	-	-	-	-	-	\$11,075	-	-	
	*Note: A surcharge fee is in effect per Board Resolution No. 885-BPBR.														
<b>Z</b>	TOTAL	-	-	-	-	-	-	-	\$1,970	\$2,110	\$2,250	\$2,615	\$5,380	\$2,915	
	*Note: A surcharge fee is in effect per Board Resolution Nos. 1227, 1265, 1268, 1386.														
<b>BX</b>	TOTAL	-	-	-	-	-	-	-	-	-	-	-	\$9,140	-	
	*Note: A surcharge fee is in effect per Board Resolution Nos. 2017-864 & 2018-908.														
<b>CM</b>	TOTAL	\$90	\$105	\$135	\$145	\$160	\$165	\$165	\$165	\$175	\$185	\$200	\$235	\$485	\$260
	*Note: A surcharge fee is in effect per Board Resolution No.1228.														
<b>CN</b>	TOTAL	-	-	-	-	-	-	-	\$2,200	\$2,395	\$2,695	\$3,465	\$3,690	\$3,925	
	*Note: A surcharge fee is in effect per Board Resolution Nos. 1159, 1342, 1414, & 1422.														
<b>DE</b>	TOTAL	-	-	-	-	-	\$790	\$790	\$790	\$840	\$900	-	\$1,120	\$1,250	\$1,250
	*Note: A surcharge fee is in effect per Board Resolution No. 2006-486.														
<b>DN</b>	TOTAL	-	-	-	-	-	\$10,510	\$10,850	\$11,140	\$11,140	-	-	-	-	\$16,510
	*Note: A surcharge fee is in effect per Board Resolution Nos. 2016-840 & 2018-908.														
<b>DO</b>	TOTAL	-	-	-	-	-	-	\$3,680	\$3,680	\$3,950	\$3,950	-	\$5,170	\$5,460	
	*Note: A surcharge fee is in effect per Board Resolution Nos. 2007-522, 2014-806, 2018-887, & 2018-908. A surcharge fee for Loma Vista Community Center South is pending Board Resolution approval for 2021.														
<b>7D</b>	TOTAL	-	-	-	-	-	-	-	-	-	-	-	\$3,651	-	
	*Note: A surcharge fee is in effect per Board Resolution Nos. 2005-480 & 2018-908.														
<b>7H</b>	TOTAL	-	-	-	-	-	-	-	-	-	-	-	\$3,651	-	
	*Note: A surcharge fee is in effect per Board Resolution Nos. 2005-480 & 2018-908.														

