

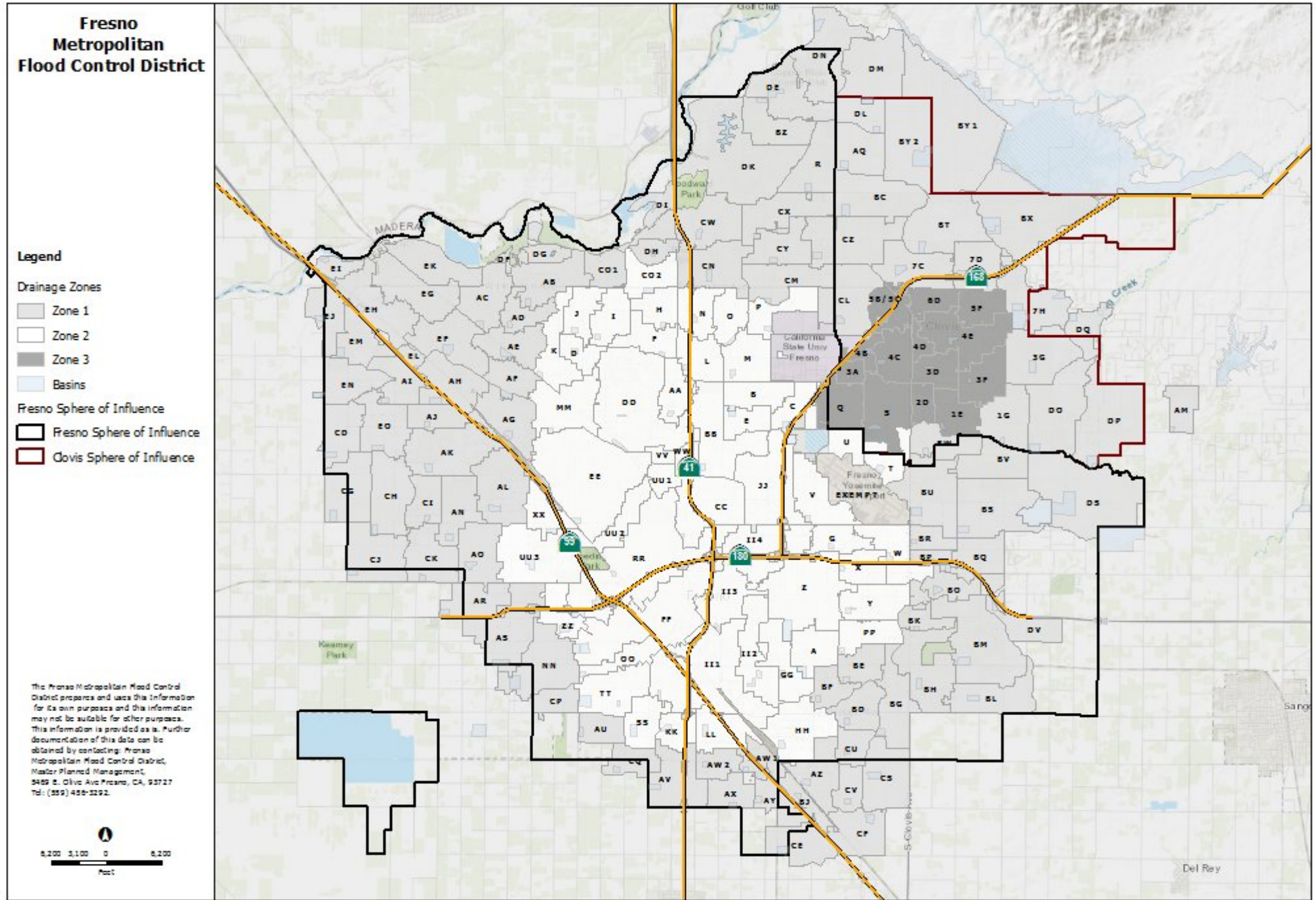
# Fresno Metropolitan Flood Control District



## 2021 DRAINAGE FEE SCHEDULE

### City of Clovis

Effective Date: 3/1/2021



### DRAINAGE FEE SCHEDULE FOR ZONE 1: PLANNED LOCAL DRAINAGE AREAS

Area		AE-5, A-L, O	A1, A2, RR	R-1-E, R-1-EH, R-A	R-1-A, R-1-AH	R-1-B, R-1-C, RE	R-1 40%	R-1 45%	R-1 50%	R-2, M-H	R-3	R-4, T-P	M-1, M-2, M-3, C-R, M-1-P, S-L	C-P, C-M, R-P	C-1, C-2, C-3, C-4, C-5, C-6, C-L, P	Total Cost
<b>AQ</b>	BASIN	\$1,610	\$1,830	\$2,300	\$2,750	\$3,210	\$3,440	\$3,610	\$3,790	\$3,790	\$4,240	\$5,160	\$7,500	\$8,030	\$8,610	\$3,458,430
	PIPE	\$3,750	\$4,240	\$5,630	\$6,120	\$6,640	\$6,910	\$7,130	\$7,320	\$7,320	\$7,840	\$8,370	\$9,720	\$10,280	\$10,850	\$5,302,330
	<b>TOTAL</b>	<b>\$5,360</b>	<b>\$6,070</b>	<b>\$7,930</b>	<b>\$8,870</b>	<b>\$9,850</b>	<b>\$10,350</b>	<b>\$10,740</b>	<b>\$11,110</b>	<b>\$11,110</b>	<b>\$12,080</b>	<b>\$13,530</b>	<b>\$17,220</b>	<b>\$18,310</b>	<b>\$19,460</b>	<b>\$8,760,760</b>
<b>BC</b>	BASIN	\$1,730	\$1,970	\$2,470	\$2,950	\$3,450	\$3,690	\$3,880	\$4,070	\$4,070	\$4,550	\$5,540	\$8,060	\$8,630	\$9,250	\$4,739,270
	PIPE	\$2,560	\$2,890	\$3,830	\$4,170	\$4,520	\$4,700	\$4,860	\$4,980	\$4,980	\$5,340	\$5,700	\$6,620	\$7,000	\$7,380	\$5,156,740
	<b>TOTAL</b>	<b>\$4,290</b>	<b>\$4,860</b>	<b>\$6,300</b>	<b>\$7,120</b>	<b>\$7,970</b>	<b>\$8,390</b>	<b>\$8,740</b>	<b>\$9,050</b>	<b>\$9,050</b>	<b>\$9,890</b>	<b>\$11,240</b>	<b>\$14,680</b>	<b>\$15,630</b>	<b>\$16,630</b>	<b>\$9,896,010</b>
<b>BT</b>	BASIN	\$2,200	\$2,510	\$3,150	\$3,770	\$4,410	\$4,710	\$4,960	\$5,200	\$5,200	\$5,820	\$7,070	\$10,290	\$11,010	\$11,810	\$4,576,050
	PIPE	\$3,970	\$4,490	\$5,960	\$6,470	\$7,030	\$7,310	\$7,550	\$7,750	\$7,750	\$8,300	\$8,860	\$10,290	\$10,880	\$11,480	\$7,282,080
	<b>TOTAL</b>	<b>\$6,170</b>	<b>\$7,000</b>	<b>\$9,110</b>	<b>\$10,240</b>	<b>\$11,440</b>	<b>\$12,020</b>	<b>\$12,510</b>	<b>\$12,950</b>	<b>\$12,950</b>	<b>\$14,120</b>	<b>\$15,930</b>	<b>\$20,580</b>	<b>\$21,890</b>	<b>\$23,290</b>	<b>\$11,858,130</b>
<b>BU</b>	BASIN	\$510	\$580	\$730	\$870	\$1,020	\$1,090	\$1,140	\$1,200	\$1,200	\$1,340	\$1,630	\$2,370	\$2,540	\$2,720	\$2,283,300
	PIPE	\$1,620	\$1,830	\$2,430	\$2,640	\$2,870	\$2,980	\$3,080	\$3,160	\$3,160	\$3,390	\$3,620	\$4,200	\$4,440	\$4,690	\$4,270,860
	<b>TOTAL</b>	<b>\$2,130</b>	<b>\$2,410</b>	<b>\$3,160</b>	<b>\$3,510</b>	<b>\$3,890</b>	<b>\$4,070</b>	<b>\$4,220</b>	<b>\$4,360</b>	<b>\$4,360</b>	<b>\$4,730</b>	<b>\$5,250</b>	<b>\$6,570</b>	<b>\$6,980</b>	<b>\$7,410</b>	<b>\$6,554,160</b>
<b>BW</b>	BASIN	\$970	\$1,110	\$1,390	\$1,660	\$1,940	\$2,080	\$2,190	\$2,300	\$2,300	\$2,570	\$3,120	\$4,540	\$4,860	\$5,210	\$1,211,930
	PIPE	\$1,090	\$1,240	\$1,640	\$1,780	\$1,940	\$2,010	\$2,080	\$2,130	\$2,130	\$2,290	\$2,440	\$2,830	\$3,000	\$3,160	\$1,082,900
	<b>TOTAL</b>	<b>\$2,060</b>	<b>\$2,350</b>	<b>\$3,030</b>	<b>\$3,440</b>	<b>\$3,880</b>	<b>\$4,090</b>	<b>\$4,270</b>	<b>\$4,430</b>	<b>\$4,430</b>	<b>\$4,860</b>	<b>\$5,560</b>	<b>\$7,370</b>	<b>\$7,860</b>	<b>\$8,370</b>	<b>\$2,294,830</b>
<b>BX</b>	BASIN	\$2,130	\$2,130	\$2,670	\$3,200	\$3,740	\$4,000	\$4,210	\$4,410	\$4,410	\$4,930	\$6,000	\$8,730	\$9,350	\$10,020	\$7,690,715
	PIPE	\$2,660	\$2,660	\$3,530	\$3,840	\$4,160	\$4,330	\$4,470	\$4,590	\$4,590	\$4,920	\$5,250	\$6,090	\$6,450	\$6,800	\$8,068,477
	<b>TOTAL</b>	<b>\$4,790</b>	<b>\$4,790</b>	<b>\$6,200</b>	<b>\$7,040</b>	<b>\$7,900</b>	<b>\$8,330</b>	<b>\$8,680</b>	<b>\$9,000</b>	<b>\$9,000</b>	<b>\$9,850</b>	<b>\$11,250</b>	<b>\$14,820</b>	<b>\$15,800</b>	<b>\$16,820</b>	<b>\$15,759,192</b>
<i>*Note: A surcharge fee is in effect per Board Resolution Nos. 2017-864 &amp; 2018-908.</i>																
<b>BY2</b>	BASIN	\$1,770	\$2,010	\$2,530	\$3,020	\$3,530	\$3,780	\$3,970	\$4,170	\$4,170	\$4,660	\$5,670	\$8,250	\$8,830	\$9,470	\$4,159,720
	PIPE	\$5,280	\$5,960	\$7,920	\$8,600	\$9,340	\$9,710	\$10,030	\$10,290	\$10,290	\$11,030	\$11,770	\$13,670	\$14,460	\$15,260	\$10,408,360
	<b>TOTAL</b>	<b>\$7,050</b>	<b>\$7,970</b>	<b>\$10,450</b>	<b>\$11,620</b>	<b>\$12,870</b>	<b>\$13,490</b>	<b>\$14,000</b>	<b>\$14,460</b>	<b>\$14,460</b>	<b>\$15,690</b>	<b>\$17,440</b>	<b>\$21,920</b>	<b>\$23,290</b>	<b>\$24,730</b>	<b>\$14,568,080</b>
<b>BZ</b>	BASIN	\$2,770	\$3,150	\$3,960	\$4,730	\$5,530	\$5,920	\$6,230	\$6,530	\$6,530	\$7,310	\$8,880	\$12,920	\$13,840	\$14,830	\$3,515,460
	PIPE	\$1,930	\$2,180	\$2,890	\$3,140	\$3,410	\$3,550	\$3,670	\$3,760	\$3,760	\$4,030	\$4,300	\$5,000	\$5,290	\$5,580	\$2,081,640
	<b>TOTAL</b>	<b>\$4,700</b>	<b>\$5,330</b>	<b>\$6,850</b>	<b>\$7,870</b>	<b>\$8,940</b>	<b>\$9,470</b>	<b>\$9,900</b>	<b>\$10,290</b>	<b>\$10,290</b>	<b>\$11,340</b>	<b>\$13,180</b>	<b>\$17,920</b>	<b>\$19,130</b>	<b>\$20,410</b>	<b>\$5,597,100</b>
<b>CL</b>	BASIN	\$810	\$930	\$1,160	\$1,390	\$1,630	\$1,740	\$1,830	\$1,920	\$1,920	\$2,150	\$2,610	\$3,800	\$4,070	\$4,360	\$2,130,360
	PIPE	\$1,160	\$1,310	\$1,740	\$1,890	\$2,050	\$2,130	\$2,200	\$2,260	\$2,260	\$2,420	\$2,580	\$3,000	\$3,170	\$3,340	\$2,199,380
	<b>TOTAL</b>	<b>\$1,970</b>	<b>\$2,240</b>	<b>\$2,900</b>	<b>\$3,280</b>	<b>\$3,680</b>	<b>\$3,870</b>	<b>\$4,030</b>	<b>\$4,180</b>	<b>\$4,180</b>	<b>\$4,570</b>	<b>\$5,190</b>	<b>\$6,800</b>	<b>\$7,240</b>	<b>\$7,700</b>	<b>\$4,329,740</b>
<b>CZ</b>	BASIN	\$540	\$620	\$780	\$930	\$1,090	\$1,170	\$1,230	\$1,290	\$1,290	\$1,440	\$1,750	\$2,540	\$2,720	\$2,920	\$1,504,630
	PIPE	\$1,220	\$1,380	\$1,830	\$1,990	\$2,160	\$2,240	\$2,320	\$2,380	\$2,380	\$2,550	\$2,720	\$3,160	\$3,340	\$3,520	\$2,705,940
	<b>TOTAL</b>	<b>\$1,760</b>	<b>\$2,000</b>	<b>\$2,610</b>	<b>\$2,920</b>	<b>\$3,250</b>	<b>\$3,410</b>	<b>\$3,550</b>	<b>\$3,670</b>	<b>\$3,670</b>	<b>\$3,990</b>	<b>\$4,470</b>	<b>\$5,700</b>	<b>\$6,060</b>	<b>\$6,440</b>	<b>\$4,210,570</b>
<b>DL</b>	BASIN	\$2,550	\$2,910	\$3,650	\$4,360	\$5,100	\$5,460	\$5,740	\$6,020	\$6,020	\$6,730	\$8,190	\$11,910	\$12,750	\$13,670	\$2,971,630
	PIPE	\$3,580	\$4,040	\$5,370	\$5,830	\$6,330	\$6,580	\$6,800	\$6,980	\$6,980	\$7,480	\$7,980	\$9,270	\$9,800	\$10,340	\$2,929,340
	<b>TOTAL</b>	<b>\$6,130</b>	<b>\$6,950</b>	<b>\$9,020</b>	<b>\$10,190</b>	<b>\$11,430</b>	<b>\$12,040</b>	<b>\$12,540</b>	<b>\$13,000</b>	<b>\$13,000</b>	<b>\$14,210</b>	<b>\$16,170</b>	<b>\$21,180</b>	<b>\$22,550</b>	<b>\$24,010</b>	<b>\$5,900,970</b>
<b>DM</b>	BASIN	\$1,910	\$2,180	\$2,730	\$3,270	\$3,820	\$4,090	\$4,300	\$4,510	\$4,510	\$5,050	\$6,140	\$8,930	\$9,560	\$10,250	\$4,679,720
	PIPE	\$4,920	\$5,560	\$7,380	\$8,020	\$8,710	\$9,060	\$9,350	\$9,600	\$9,600	\$10,290	\$10,970	\$12,750	\$13,480	\$14,220	\$9,933,490
	<b>TOTAL</b>	<b>\$6,830</b>	<b>\$7,740</b>	<b>\$10,110</b>	<b>\$11,290</b>	<b>\$12,530</b>	<b>\$13,150</b>	<b>\$13,650</b>	<b>\$14,110</b>	<b>\$14,110</b>	<b>\$15,340</b>	<b>\$17,110</b>	<b>\$21,680</b>	<b>\$23,040</b>	<b>\$24,470</b>	<b>\$14,613,210</b>
<b>DO</b>	BASIN	\$1,880	\$2,150	\$2,690	\$3,220	\$3,760	\$4,030	\$4,230	\$4,440	\$4,440	\$4,970	\$6,040	\$8,790	\$9,410	\$10,090	\$5,738,770
	PIPE	\$2,690	\$3,040	\$4,040	\$4,390	\$4,760	\$4,950	\$5,110	\$5,250	\$5,250	\$5,620	\$6,000	\$6,970	\$7,370	\$7,780	\$6,373,400
	<b>TOTAL</b>	<b>\$4,570</b>	<b>\$5,190</b>	<b>\$6,730</b>	<b>\$7,610</b>	<b>\$8,520</b>	<b>\$8,980</b>	<b>\$9,340</b>	<b>\$9,690</b>	<b>\$9,690</b>	<b>\$10,590</b>	<b>\$12,040</b>	<b>\$15,760</b>	<b>\$16,780</b>	<b>\$17,870</b>	<b>\$12,112,170</b>
<i>*Note: A surcharge fee is in effect per Board Resolution Nos. 2007-522, 2014-806, 2018-887, 2018-908, &amp; 2020-959.</i>																

**DRAINAGE FEE SCHEDULE FOR ZONE 1: PLANNED LOCAL DRAINAGE AREAS**

Area		AE-5, A-L, O	A1, A2, RR	R-1-E, R-1-EH, R-A	R-1-A, R-1-AH	R-1-B, R-1-C, RE	R-1 40%	R-1 45%	R-1 50%	R-2, M-H	R-3	R-4, T-P	M-1, M-2, M-3, C-R, M-1-P, S-L	C-P, C-M, R-P	C-1, C-2, C-3, C-4, C-5, C-6, C-L, P	Total Cost
DP	BASIN	\$1,660	\$1,890	\$2,370	\$2,840	\$3,320	\$3,550	\$3,730	\$3,910	\$3,910	\$4,380	\$5,320	\$7,740	\$8,290	\$8,890	\$6,192,550
	PIPE	\$5,080	\$5,740	\$7,620	\$8,280	\$8,990	\$9,350	\$9,660	\$9,910	\$9,910	\$10,620	\$11,330	\$13,160	\$13,920	\$14,690	\$14,133,450
	TOTAL	\$6,740	\$7,630	\$9,990	\$11,120	\$12,310	\$12,900	\$13,390	\$13,820	\$13,820	\$15,000	\$16,650	\$20,900	\$22,210	\$23,580	\$20,326,000
DQ	BASIN	\$5,990	\$6,830	\$8,560	\$10,240	\$11,980	\$12,820	\$13,480	\$14,130	\$14,130	\$15,810	\$19,220	\$27,970	\$29,950	\$32,100	\$4,900,200
	PIPE	\$4,390	\$4,960	\$6,590	\$7,160	\$7,770	\$8,080	\$8,350	\$8,570	\$8,570	\$9,180	\$9,800	\$11,380	\$12,040	\$12,690	\$3,104,600
	TOTAL	\$10,380	\$11,790	\$15,150	\$17,400	\$19,750	\$20,900	\$21,830	\$22,700	\$22,700	\$24,990	\$29,020	\$39,350	\$41,990	\$44,790	\$8,004,800
1G	BASIN	\$1,330	\$1,330	\$1,670	\$1,990	\$2,330	\$2,500	\$2,620	\$2,750	\$2,750	\$3,080	\$3,740	\$5,450	\$5,830	\$6,250	\$1,660,870
	PIPE	\$1,380	\$1,380	\$1,830	\$1,980	\$2,150	\$2,240	\$2,310	\$2,370	\$2,370	\$2,540	\$2,710	\$3,150	\$3,330	\$3,520	\$1,541,159
	TOTAL	\$2,710	\$2,710	\$3,500	\$3,970	\$4,480	\$4,740	\$4,930	\$5,120	\$5,120	\$5,620	\$6,450	\$8,600	\$9,160	\$9,770	\$3,202,029
3G	BASIN	\$2,130	\$2,430	\$3,050	\$3,650	\$4,270	\$4,560	\$4,800	\$5,030	\$5,030	\$5,630	\$6,850	\$9,960	\$10,670	\$11,430	\$4,649,160
	PIPE	\$2,260	\$2,560	\$3,390	\$3,690	\$4,010	\$4,160	\$4,300	\$4,410	\$4,410	\$4,730	\$5,050	\$5,860	\$6,200	\$6,540	\$4,154,740
	TOTAL	\$4,390	\$4,990	\$6,440	\$7,340	\$8,280	\$8,720	\$9,100	\$9,440	\$9,440	\$10,360	\$11,900	\$15,820	\$16,870	\$17,970	\$8,803,900
7C	BASIN	\$1,810	\$1,810	\$2,260	\$2,710	\$3,170	\$3,390	\$3,560	\$3,740	\$3,740	\$4,180	\$5,080	\$7,400	\$7,920	\$8,490	\$3,220,892
	PIPE	\$1,820	\$1,820	\$2,410	\$2,620	\$2,850	\$2,960	\$3,060	\$3,140	\$3,140	\$3,360	\$3,590	\$4,170	\$4,410	\$4,650	\$2,323,081
	TOTAL	\$3,630	\$3,630	\$4,670	\$5,330	\$6,020	\$6,350	\$6,620	\$6,880	\$6,880	\$7,540	\$8,670	\$11,570	\$12,330	\$13,140	\$5,543,973
7D	BASIN	\$2,020	\$2,310	\$2,890	\$3,460	\$4,050	\$4,330	\$4,550	\$4,770	\$4,770	\$5,340	\$6,490	\$9,450	\$10,120	\$10,840	\$3,547,180
	PIPE	\$1,760	\$1,990	\$2,640	\$2,870	\$3,110	\$3,230	\$3,340	\$3,430	\$3,430	\$3,670	\$3,920	\$4,550	\$4,820	\$5,080	\$2,133,030
	TOTAL	\$3,780	\$4,300	\$5,530	\$6,330	\$7,160	\$7,560	\$7,890	\$8,200	\$8,200	\$9,010	\$10,410	\$14,000	\$14,940	\$15,920	\$5,680,210
*Note: A surcharge fee is in effect per Board Resolution Nos. 2005-480 & 2018-908.																
7H	BASIN	\$2,040	\$2,320	\$2,910	\$3,480	\$4,070	\$4,360	\$4,580	\$4,800	\$4,800	\$5,370	\$6,530	\$9,500	\$10,180	\$10,910	\$4,614,570
	PIPE	\$3,620	\$4,090	\$5,430	\$5,900	\$6,410	\$6,660	\$6,880	\$7,060	\$7,060	\$7,570	\$8,080	\$9,380	\$9,920	\$10,470	\$5,814,880
	TOTAL	\$5,660	\$6,410	\$8,340	\$9,380	\$10,480	\$11,020	\$11,460	\$11,860	\$11,860	\$12,940	\$14,610	\$18,880	\$20,100	\$21,380	\$10,429,450
*Note: A surcharge fee is in effect per Board Resolution Nos. 2005-480 & 2018-908.																

**DRAINAGE FEE SCHEDULE FOR ZONE 2: PLANNED LOCAL DRAINAGE AREAS**

Area	AE-5, A-L, O	A1, A2, RR	R-1-E, R-1-EH, R-A	R-1-A, R-1-AH	R-1-B, R-1-C, RE	R-1 40%	R-1 45%	R-1 50%	R-2, M-H	R-3	R-4, T-P	M-1, M-2, M-3, C-R, M-1-P, S-L	C-P, C-M, R-P	C-1, C-2, C-3, C-4, C-5, C-6, C-L, P	Total Cost
<b>Zone 2</b>															
BASIN	\$710	\$810	\$1,010	\$1,210	\$1,410	\$1,510	\$1,590	\$1,670	\$1,670	\$1,870	\$2,270	\$3,300	\$3,530	\$3,790	\$79,605,018
PIPE	\$1,530	\$1,730	\$2,300	\$2,490	\$2,710	\$2,820	\$2,910	\$2,980	\$2,980	\$3,200	\$3,410	\$3,960	\$4,190	\$4,420	\$120,942,404
<b>TOTAL</b>	<b>\$2,240</b>	<b>\$2,540</b>	<b>\$3,310</b>	<b>\$3,700</b>	<b>\$4,120</b>	<b>\$4,330</b>	<b>\$4,500</b>	<b>\$4,650</b>	<b>\$4,650</b>	<b>\$5,070</b>	<b>\$5,680</b>	<b>\$7,260</b>	<b>\$7,720</b>	<b>\$8,210</b>	<b>\$200,547,422</b>

**Planned Local Drianage Areas: Zone 2**

Area	Basin Cost	Pipe Cost	Total	Area	Basin Cost	Pipe Cost	Total	Area	Basin Cost	Pipe Cost	Total
A	\$2,202,851	\$1,316,582	<b>\$3,519,433</b>	X	\$1,717,823	\$448,103	<b>\$2,165,926</b>	OO	\$2,060,127	\$754,900	<b>\$2,815,027</b>
B	\$982,476	\$142,170	<b>\$1,124,646</b>	Y	\$1,132,068	\$2,262,773	<b>\$3,394,841</b>	PP	\$1,625,135	\$1,217,957	<b>\$2,843,092</b>
C	\$479,953	\$317,414	<b>\$797,367</b>	Z	\$1,121,879	\$2,523,279	<b>\$3,645,158 **</b>	RR	\$4,998,735	\$17,955,076	<b>\$22,953,811</b>
D	\$801,395	\$694,153	<b>\$1,495,548</b>	AA	\$976,454	\$1,241,714	<b>\$2,218,168</b>	SS	\$2,245,208	\$2,551,192	<b>\$4,796,400</b>
E	\$747,392	\$228,063	<b>\$975,455</b>	BB	\$487,097	\$822,774	<b>\$1,309,871</b>	TT	\$1,777,933	\$1,507,214	<b>\$3,285,147</b>
F	\$272,523	\$302,016	<b>\$574,539</b>	CC	\$518,778	\$2,084,691	<b>\$2,603,469</b>	UU1	\$474,282	\$919,840	<b>\$1,394,122</b>
G	\$1,141,796	\$157,007	<b>\$1,298,803</b>	CO2	\$892,058	\$1,424,260	<b>\$2,316,318</b>	UU2	\$1,458,495	\$1,686,286	<b>\$3,144,781</b>
H	\$99,858	\$214,682	<b>\$314,540</b>	DD	\$1,833,060	\$7,704,370	<b>\$9,537,430</b>	UU3	\$3,005,594	\$8,102,226	<b>\$11,107,820</b>
I	\$227,828	\$248,025	<b>\$475,853</b>	EE	\$754,118	\$3,353,355	<b>\$4,107,473</b>	VV	\$34,124	\$116,961	<b>\$151,085</b>
J	\$1,634,773	\$376,115	<b>\$2,010,888</b>	FF	\$1,433,799	\$9,519,735	<b>\$10,953,534</b>	WW	\$18,653	\$360,044	<b>\$378,697</b>
K	\$985,172	\$674,818	<b>\$1,659,990</b>	GG	\$2,285,718	\$1,446,392	<b>\$3,732,110</b>	XX	\$1,025,092	\$2,132,726	<b>\$3,157,818</b>
L	\$633,035	\$494,850	<b>\$1,127,885</b>	HH	\$3,952,602	\$4,941,398	<b>\$8,894,000</b>	ZZ	\$2,442,162	\$2,535,950	<b>\$4,978,112</b>
M	\$967,464	\$255,974	<b>\$1,223,438</b>	II1	\$4,491,616	\$16,095,792	<b>\$20,587,408</b>				
N	\$462,283	\$437,888	<b>\$900,171</b>	II2	\$7,587,542	\$1,269,885	<b>\$8,857,427</b>				
O	\$986,910	\$190,138	<b>\$1,177,048</b>	II3	\$1,661,538	\$1,465,005	<b>\$3,126,543</b>				
P	\$835,552	\$277,552	<b>\$1,113,104</b>	II4	\$2,071,813	\$1,113,110	<b>\$3,184,923</b>				
T	\$1,706,427	\$2,127,357	<b>\$3,833,784</b>	JJ	\$1,868,936	\$3,844,665	<b>\$5,713,601</b>				
U	\$1,327,425	\$668,375	<b>\$1,995,800</b>	KK	\$1,824,753	\$1,527,562	<b>\$3,352,315</b>				
V	\$648,023	\$1,726,395	<b>\$2,374,418</b>	LL	\$2,071,187	\$3,070,127	<b>\$5,141,314</b>				
W	\$2,058,214	\$3,144,362	<b>\$5,202,576 *</b>	MM	\$555,289	\$949,106	<b>\$1,504,395</b>				

W \* Note: A surcharge fee is in effect per Board Resolution No. 885-BPBR.  
 Z \*\* Note: A surcharge fee is in effect per Board Resolution Nos. 1227, 1265, 1268, 1386.

**DRAINAGE FEE SCHEDULE FOR ZONE 3: PLANNED LOCAL DRAINAGE AREAS**

Area	AE-5, A-L, O	A1, A2, RR	R-1-E, R-1-EH, R-A	R-1-A, R-1-AH	R-1-B, R-1-C, RE	R-1 40%	R-1 45%	R-1 50%	R-2, M-H	R-3	R-4, T-P	M-1, M-2, M-3, C-R, M-1-P, S-L	C-P, C-M, R-P	C-1, C-2, C-3, C-4, C-5, C-6, C-L, P	Total Cost
<b>Zone 3</b>															
BASIN	\$1,350	\$1,530	\$1,920	\$2,300	\$2,690	\$2,880	\$3,030	\$3,180	\$3,180	\$3,550	\$4,320	\$6,280	\$6,730	\$7,210	\$24,837,792
PIPE	\$1,480	\$1,680	\$2,230	\$2,420	\$2,630	\$2,730	\$2,820	\$2,890	\$2,890	\$3,100	\$3,310	\$3,840	\$4,060	\$4,290	\$19,594,270
TOTAL	\$2,830	\$3,210	\$4,150	\$4,720	\$5,320	\$5,610	\$5,850	\$6,070	\$6,070	\$6,650	\$7,630	\$10,120	\$10,790	\$11,500	\$44,432,062

**Planned Local Drianage Areas: Zone 3**

Area	Basin Cost	Pipe Cost	Total
Q	\$381,015	\$411,805	<b>\$792,820</b>
S	\$1,306,359	\$2,237,246	<b>\$3,543,605</b>
1E	\$2,036,329	\$920,107	<b>\$2,956,436</b>
2D	\$806,960	\$1,278,863	<b>\$2,085,823</b>
3A	\$1,246,423	\$831,608	<b>\$2,078,031</b>
3D	\$1,398,783	\$1,032,196	<b>\$2,430,979</b>
3F	\$1,080,072	\$1,224,524	<b>\$2,304,596</b>
4B	\$1,370,562	\$904,730	<b>\$2,275,292</b>
4C	\$1,132,175	\$2,383,951	<b>\$3,516,126</b>
4D	\$3,574,465	\$929,777	<b>\$4,504,242</b>
4E	\$3,326,038	\$2,136,302	<b>\$5,462,340</b>
5B/5C	\$4,201,521	\$2,185,870	<b>\$6,387,391</b>
5F	\$1,544,804	\$1,530,399	<b>\$3,075,203</b>
6D	\$1,432,286	\$1,586,892	<b>\$3,019,178</b>

**DRAINAGE FEE SCHEDULE FOR SURCHARGE AREAS: PLANNED LOCAL DRAINAGE AREAS**

Area	AE-5, A-L, O	A1, A2, RR	R-1-E, R-1-EH, R-A	R-1-A, R-1-AH	R-1-B, R-1-C, RE	R-1 40%	R-1 45%	R-1 50%	R-2, M-H	R-3	R-4, T-P	M-1, M-2, M-3, C-R, M-1-P, S-L	C-P, C-M, R-P	C-1, C-2, C-3, C-4, C-5, C-6, C-L, P	
<b>W</b>	TOTAL	-	-	-	-	-	-	-	-	-	-	\$11,075	-	-	
	*Note: A surcharge fee is in effect per Board Resolution No. 885-BPBR.														
<b>Z</b>	TOTAL	-	-	-	-	-	-	-	\$1,970	\$2,110	\$2,250	\$2,615	\$5,380	\$2,915	
	*Note: A surcharge fee is in effect per Board Resolution Nos. 1227, 1265, 1268, 1386.														
<b>BX</b>	TOTAL	-	-	-	-	-	-	-	-	-	-	-	\$9,140	-	
	*Note: A surcharge fee is in effect per Board Resolution Nos. 2017-864 & 2018-908.														
<b>CM</b>	TOTAL	\$90	\$105	\$135	\$145	\$160	\$165	\$165	\$165	\$175	\$185	\$200	\$235	\$485	\$260
	*Note: A surcharge fee is in effect per Board Resolution No.1228.														
<b>CN</b>	TOTAL	-	-	-	-	-	-	-	\$2,200	\$2,395	\$2,695	\$3,465	\$3,690	\$3,925	
	*Note: A surcharge fee is in effect per Board Resolution Nos. 1159, 1342, 1414, & 1422.														
<b>DE</b>	TOTAL	-	-	-	-	-	\$790	\$790	\$790	\$840	\$900	-	\$1,120	\$1,250	\$1,250
	*Note: A surcharge fee is in effect per Board Resolution No. 2006-486.														
<b>DN</b>	TOTAL	-	-	-	-	-	\$10,510	\$10,850	\$11,140	\$11,140	-	-	-	-	\$16,510
	*Note: A surcharge fee is in effect per Board Resolution Nos. 2016-840 & 2018-908.														
<b>DO</b>	TOTAL	-	-	-	-	-	-	\$3,680	\$3,680	\$3,950	\$3,950	-	\$5,170	\$5,460	
	*Note: A surcharge fee is in effect per Board Resolution Nos. 2007-522, 2014-806, 2018-887, & 2018-908. A surcharge fee for Loma Vista Community Center South is pending Board Resolution approval for 2021.														
<b>7D</b>	TOTAL	-	-	-	-	-	-	-	-	-	-	-	\$3,651	-	
	*Note: A surcharge fee is in effect per Board Resolution Nos. 2005-480 & 2018-908.														
<b>7H</b>	TOTAL	-	-	-	-	-	-	-	-	-	-	-	\$3,651	-	
	*Note: A surcharge fee is in effect per Board Resolution Nos. 2005-480 & 2018-908.														



