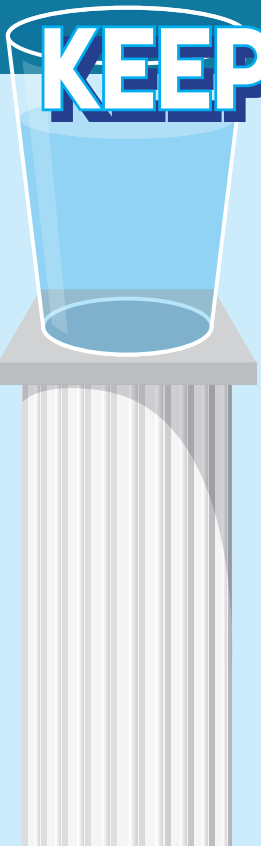
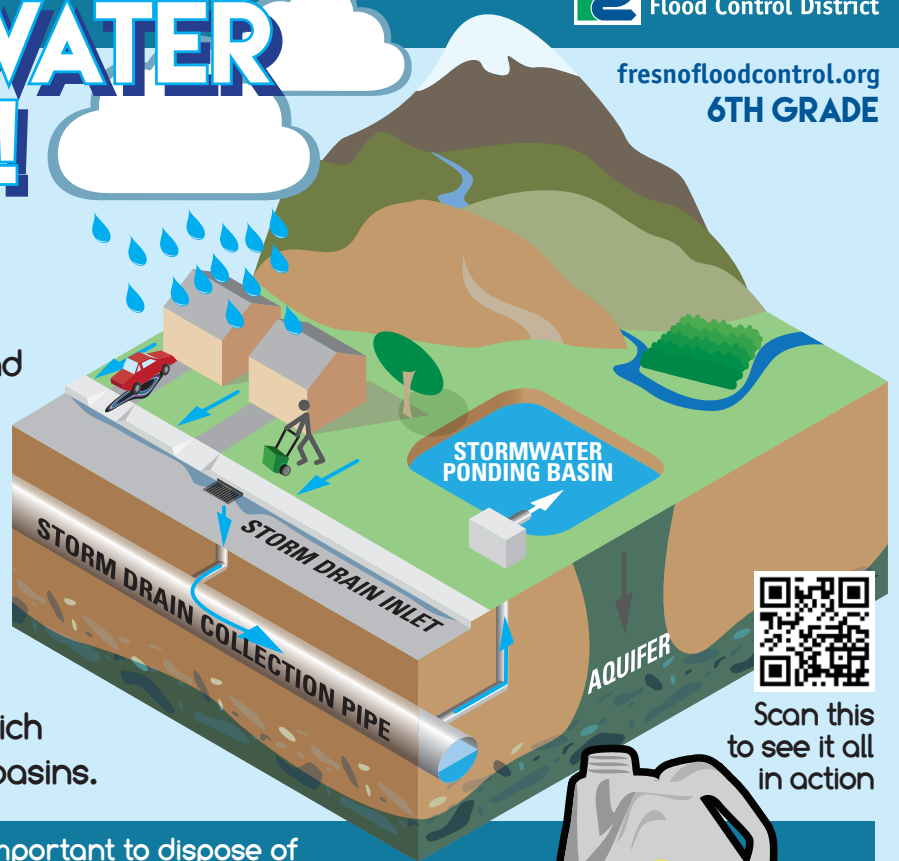


KEEP OUR WATER CLEAN!



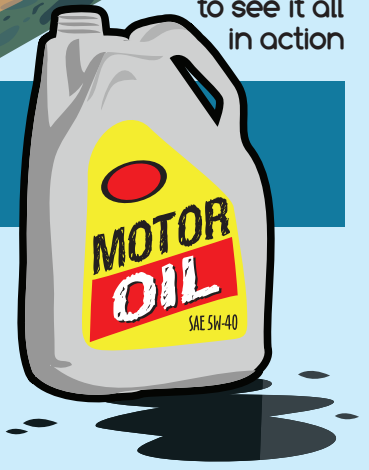
Water is a precious resource, limited by how much it rains and snows each year. As rains washes our neighborhoods clean, it also rinses street pollutants like motor oil and lawn chemicals down into the storm drains, which empty into ponding basins.



Scan this to see it all in action

MOTOR OIL IS TOXIC,

so it's very important to dispose of motor oil properly before it makes its way into our water supply. It can harm humans, and the animals who live in our stormwater basins!



DID YOU KNOW THAT JUST 1 GALLON OF USED MOTOR OIL CAN CONTAMINATE ONE MILLION GALLONS OF WATER?

That's enough water for 50 PEOPLE to use over A WHOLE YEAR!



IT'S ILLEGAL TO DISPOSE OF OIL BY POURING IT DOWN THE GUTTER OR INTO A STORM DRAIN.

THERE ARE **TWO** MAIN WAYS TO DISPOSE OF USED OIL AND FILTERS PROPERLY AND SAFELY:

1

There are many used oil and filter Certified Collection Centers available locally for the proper disposal of used motor oil and filters – for FREE! Look for this sign for a used oil and filter collection center near you.



RECYCLE USED OIL



2

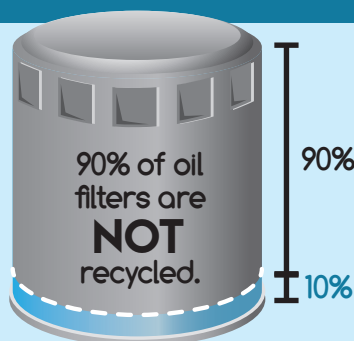


Residential Curbside Collection: Through residential curbside collection you can have your used motor oil and filters picked up at your home by your weekly collection service.

CALL FOR FREE CONTAINERS 621-1452

REMEMBER TO ALWAYS CLEAN UP OIL SPILLS, TOO!

Cover the area with absorbent material (like cat litter or sawdust), then call 600-4259 for instructions on how to dispose of this hazardous waste.



LET'S DO A BETTER JOB OF RECYCLING so we can all have a cleaner, safer community!

WORD SCRAMBLE

CAN YOU UNSCRAMBLE THE WORDS FOR THE RECYCLE MESSAGE?

yrleec sdeu rtmoo ilo nda erlifst.

pyetm lio trislef nca eb yrleecd oto.

loctec l sdeu ilo ni plsli- orpfo asotnncire.

uyo nca phle.

nalce pu ilo plsli.

nalre eehrw uryo yrcligecn tcerne si.

ysae dan fsae.

TEACHING RESOURCES

A. STUDENT QUESTIONS:

1. Where is the nearest stormwater basin?

ANSWER: Find the stormwater basin closest to the school and/or the student's house.

2. How does motor oil get into our groundwater supply?

ANSWER: From leaking cars or spilled onto the ground. When the rain comes, any oil on the ground is washed into the storm drains and winds up in the stormwater basins.

3. Where does the water that is stored in the stormwater basin go?

ANSWER: It drains through the ground and into the groundwater aquifer. That water is pumped and used in our homes. So it's important to keep our water supply clean by getting rid of used oil properly!

4. How many gallons of oil are sold in California every year?

ANSWER: 115 million gallons. Only 70% is collected as used oil, which means about 30% of all oil is not recycled properly.

5. What percentage of used motor oil filters aren't recycled?

ANSWER: 90%

6. What absorbent material can be used to soak up spilled oil?

ANSWER: Kitty litter or sawdust

B. MORE TEACHER RESOURCES:

MIXING OIL AND WATER SCIENCE EXPERIMENT:

www.sciencekids.co.nz/experiments/oilandwater.html

CITY OF FRESNO USED MOTOR OIL WEBSITE:

www.fresno.gov/Government/DepartmentDirectory/PublicUtilities/SolidWaste/MotorOil/default.htm

ENVIRONMENTAL PROTECTION AGENCY (EPA):

www.epa.gov/osw/conserva/materials/usedoil/oil.htm

Word Scramble Key: RECYCLE USED MOTOR OIL AND FILTERS • EMPTY OIL FILTERS CAN BE RECYCLED TOO • COLLECT USED OIL IN SPILL-PROOF CONTAINERS • YOU CAN HELP CLEAN UP OIL SPILLS • LEARN WHERE YOUR RECYCLING CENTER IS • EASY AND SAFE.