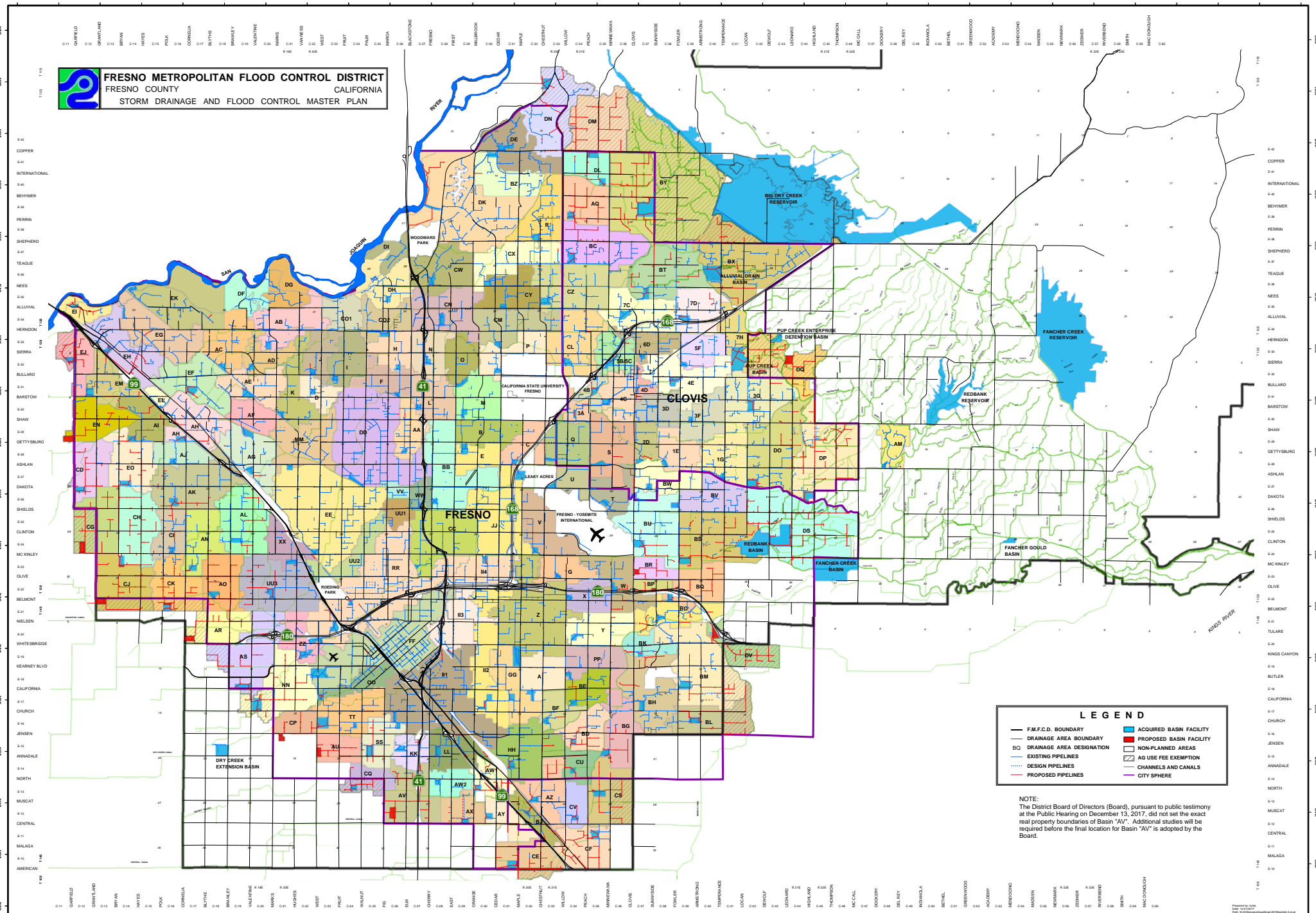


FRESNO METROPOLITAN FLOOD CONTROL DISTRICT
FRESNO COUNTY CALIFORNIA
STORM DRAINAGE AND FLOOD CONTROL MASTER PLAN



LEGEND

- F.M.F.C.D. BOUNDARY
- DRAINAGE AREA BOUNDARY
- DRAINAGE AREA DESIGNATION
- EXISTING PIPELINES
- DESIGN PIPELINES
- PROPOSED PIPELINES
- ACQUIRED BASIN FACILITY
- PROPOSED BASIN FACILITY
- NON-PLANNED AREAS
- AG USE FEE EXEMPTION
- CHANNELS AND CANALS
- CITY SPHERE

NOTE:
 The District Board of Directors (Board), pursuant to public testimony at the Public Hearing on December 13, 2017, did not set the exact real property boundaries of Basin "AV". Additional studies will be required before the final location for Basin "AV" is adopted by the Board.