

DRAINAGE FEE SCHEDULE FOR SURCHARGE AREAS: PLANNED LOCAL DRAINAGE AREAS

Area	AE-5, A-L, O	A1, A2, RR	R-1-E, R-1-EH, R-A	R-1-A, R-1-AH	R-1-B, R-1-C, RE	R-1 40%	R-1 45%	R-1 50%	R-2, M-H	R-3	R-4, T-P	M-1, M-2, M-3, C-R, M-1-P, S-L	C-P, C-M, R-P	C-1, C-2, C-3, C-4, C-5, C-6, C-L, P	
W	TOTAL	-	-	-	-	-	-	-	-	-	-	\$11,075	-	-	
	*Note: Resolution No. 885-BPBR														
Z	TOTAL	-	-	-	-	-	-	-	\$1,970	\$2,110	\$2,250	\$2,615	\$5,380	\$2,915	
	*Note: Resolution No. 1227, 1386, 1268, 1265														
BX	TOTAL	-	\$270	\$360	\$390	\$430	\$445	\$445	\$445	\$470	\$510	\$540	\$630	\$660	\$700
	*Note: Resolution No. 2008-590														
BX	TOTAL	-	-	-	-	-	-	-	-	-	-	-	\$8,020	-	
	*Note: Resolution No. 2017-864, 2017-884														
CM	TOTAL	\$90	\$105	\$135	\$145	\$160	\$165	\$165	\$165	\$175	\$185	\$200	\$235	\$485	\$260
	*Note: Resolution No. 1228														
CN	TOTAL	-	-	-	-	-	-	-	\$2,200	\$2,395	\$2,695	\$3,465	\$3,690	\$3,925	
	*Note: Resolution No. 1159														
DE	TOTAL	-	-	-	-	-	\$790	\$790	\$790	\$840	\$900	-	\$1,120	\$1,250	\$1,250
	*Note: Resolution No. 2006-486														
DN	TOTAL	-	-	-	-	-	\$6,740	\$6,960	\$6,960	\$7,140	-	-	-	-	\$10,590
	*Note: Resolution No. 2016-840, 2017-884														
DO	TOTAL	-	-	-	-	-	-	-	\$4,180	\$4,180	\$4,480	-	-	\$5,880	\$6,200
	*Note: Resolution No. 2007-522, 2014-806, 2018-887														
7D	TOTAL	\$3,372	\$3,372	\$3,372	\$3,372	\$3,372	\$3,372	\$3,372	\$3,372	\$3,372	\$3,372	\$3,372	\$3,372	\$3,372	\$3,372
	*Note: Resolution No. 2005-480														
7H	TOTAL	\$3,372	\$3,372	\$3,372	\$3,372	\$3,372	\$3,372	\$3,372	\$3,372	\$3,372	\$3,372	\$3,372	\$3,372	\$3,372	\$3,372
	*Note: Resolution No. 2005-480														

Fresno Metropolitan Flood Control District

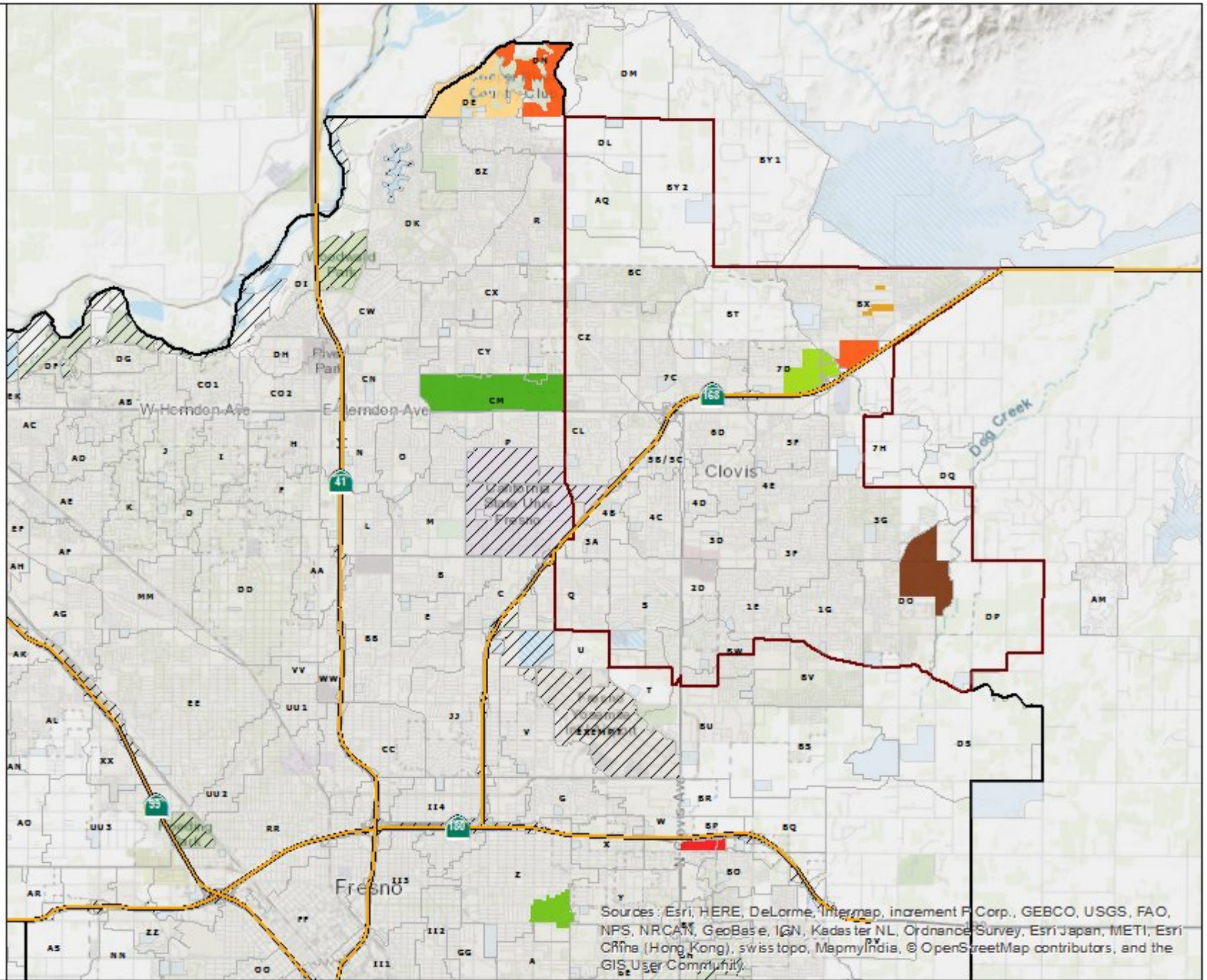
Legend

Surcharge Resolutions

- 1228
- 1386
- 2005-480
- 2006-486
- 2008-590
- 2014-806
- 2017-884
- 885-BPBR

- Drainage Areas
- Exempt Areas
- Basins
- Fresno Sphere of Influence
- Clovis Sphere of Influence

The Fresno Metropolitan Flood Control District prepares and uses this information for its own purposes and this information may not be suitable for other purposes. This information is provided as is. Further documentation of this data can be obtained by contacting: Fresno Metropolitan Flood Control District, Master Planned Management, 5455 E. Olive Ave Fresno, CA, 93727 Tel: (559) 458-3292.



Sources: Esri, HERE, DeLorme, Intermap, increment P Corp., GEBCO, USGS, FAO, NPS, NRCAN, GeoBasis, IGN, Kadas ter NL, Ordnance Survey, Esri Japan, METI, Esri China (Hong Kong), swisstopo, MapmyIndia, © OpenStreetMap contributors, and the GIS User Community.