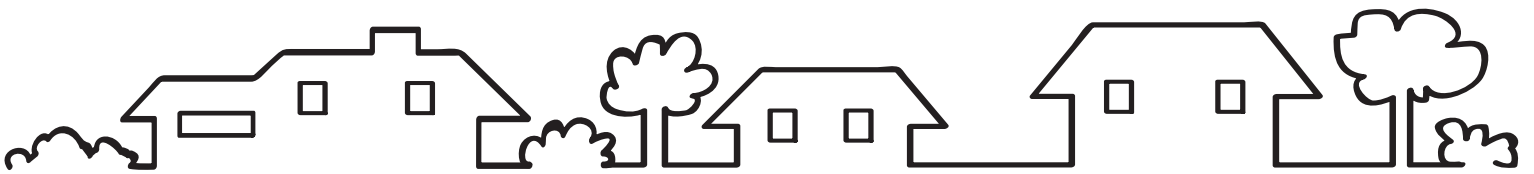


Produced by:



Fresno Metropolitan  
Flood Control District

[www.fresnofloodcontrol.org](http://www.fresnofloodcontrol.org)



## CLEAN STORM WATER IS IMPORTANT!

We all need to understand that a safe, clean water supply is important. Our drinking water needs to be very clean to protect our health. Farmers need clean water for the food they grow for us. Animals also need clean water to drink and live in.

That is why we need to keep storm water runoff clean. Raindrops splash onto the street and race down the gutter where it ends up in a storm drain. This water picks up everything along the way and goes straight to a ponding basin, canal, creek or the San Joaquin River. Some of the things the water picks up are motor oil, bug killers and trash. These could go into our groundwater. And remember, groundwater is our drinking water. By keeping the water clean and conserving water, we will have more to use.

## NEW WORDS FOR YOU TO KNOW:

**Storm water** – *Water and rain that falls to the ground, flows across and ends up in the storm drain system*

**Pollution** – *Things that are bad for the environment like chemicals, trash, and motor oil.*

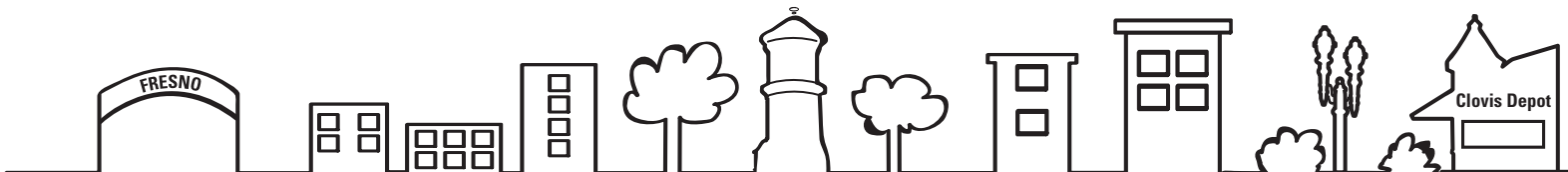
**Runoff** – *Water that drains into the storm drain and can pick up pollution along the way.*

## QUESTION?????

What are some ways you can help keep the water clean?

What are some ways you can help stop pollution?

What are some ways you can help conserve water?



# CLEAN WATER WORD FIND

I	L	A	H	B	Y	C	P	R	C	J	S	T	O	R	M	W	A	T	E	R
K	I	T	T	Y	L	I	T	T	E	R	F	Z	U	K	U	D	C	W	Z	K
E	Y	R	J	D	T	U	K	Y	I	C	E	Q	H	X	Y	P	C	N	A	U
S	C	D	H	L	J	Z	X	V	F	P	K	U	S	G	Q	M	Z	I	X	D
Z	S	O	G	E	V	P	S	I	B	E	N	G	S	B	A	H	M	S	I	N
J	O	C	N	S	J	E	X	R	T	S	Y	D	H	E	J	J	U	A	O	R
S	H	L	D	S	F	B	S	G	U	T	T	E	R	G	S	P	H	B	V	J
O	A	Z	G	T	E	P	A	B	N	I	H	M	C	O	C	M	Z	G	T	U
I	M	M	R	O	H	R	L	S	D	C	F	Q	L	G	Y	U	O	N	H	K
L	B	P	J	X	N	E	V	V	Q	I	J	E	W	R	M	G	T	I	Y	P
Z	S	C	H	I	B	H	W	E	O	D	P	V	M	A	R	A	H	D	R	L
F	H	J	W	C	K	Q	U	I	R	E	G	C	K	E	N	Y	W	O	E	N
Y	J	F	E	B	C	O	F	X	K	B	Z	F	F	M	X	D	T	O	V	A
G	R	O	U	N	D	W	A	T	E	R	R	I	P	Q	I	E	N	P	W	E
R	E	G	Z	G	Y	J	Y	B	U	F	U	G	M	O	C	P	M	A	F	L
S	C	R	P	F	C	L	D	G	W	Q	J	D	H	T	H	K	L	J	Z	C
C	Y	J	X	A	A	S	V	B	A	N	P	O	L	L	U	T	I	O	N	M
F	C	H	W	E	F	R	C	T	F	H	Y	F	Z	H	A	U	F	F	I	H
Q	L	L	M	A	U	S	S	T	O	R	M	D	R	A	I	N	D	V	R	W
H	E	W	C	S	J	K	X	L	Z	C	X	Q	B	G	N	C	R	Z	E	P
I	K	S	H	D	F	F	O	N	U	R	K	I	S	L	H	P	D	R	U	H

Aquifer

Clean

Conserve

Groundwater

Gutter

Kitty Litter

Less Toxic

Pesticide

Pollution

Protect

Recycle

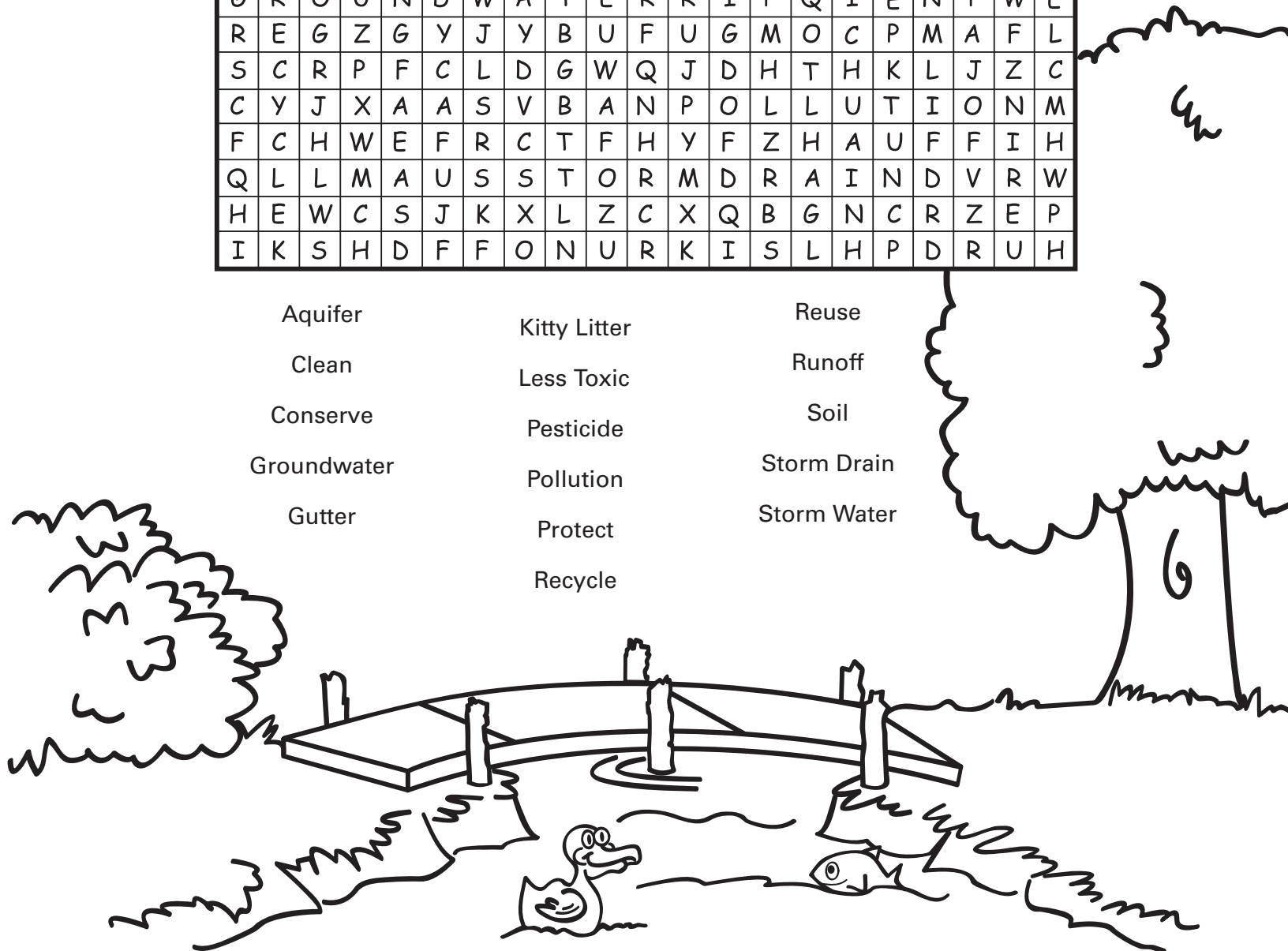
Reuse

Runoff

Soil

Storm Drain

Storm Water



# WHAT'S THE

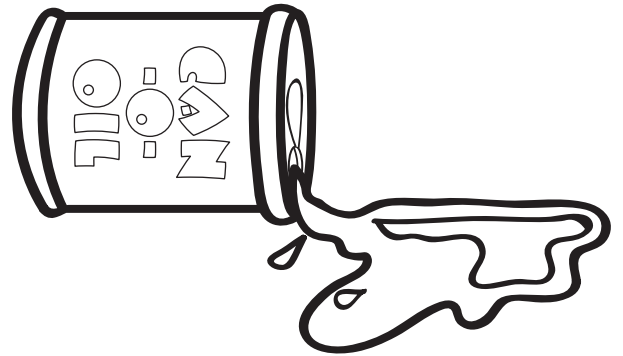
Answer the following questions and use the letter of your answers to find out the point.

1. Where does water from your driveway go?

- a. To the store
- c. To the gutter
- t. To the park

2. What do you do with used motor oil from your car when you change your oil?

- l. Recycle it
- p. Pour it on the ground
- b. Put it in the trash



3. What do you do with wrappers when you're done eating?

- y. Throw them on the ground
- e. Put them in the garbage
- i. Eat them with your hamburger



4. What is the main source of our drinking water?

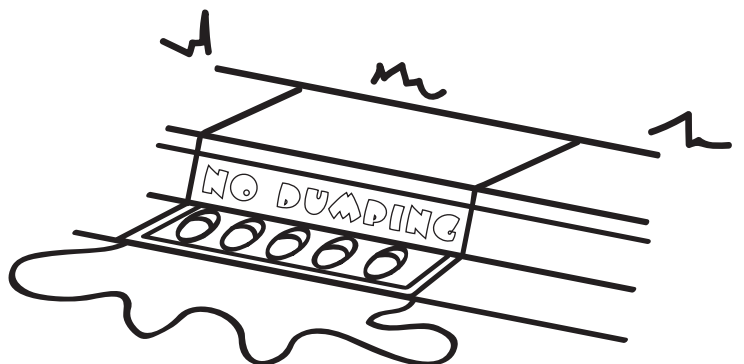
- c. River water
- n. Ocean water
- a. Ground water

5. What is an important thing to do with our water?

- q. Make it dirty
- n. Conserve it
- v. Swim in it

6. Where does water from the gutter go?

- w. Storm drain
- s. Nowhere
- y. To a swimming pool

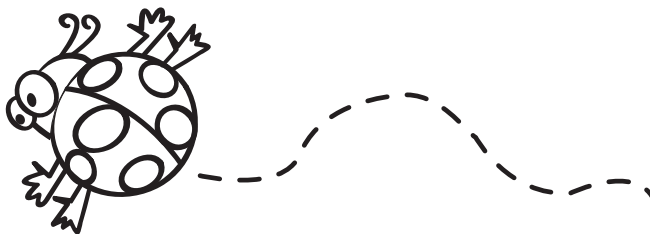


# POINT?



7. What garden-friendly bug acts as a pesticide and eats aphids off of rose bushes?

- h. Your little brother
- a. Ladybug
- j. Stink bug



8. What is something a cat uses and is also good for cleaning up spills in the garage?

- u. Ball of string
- t. Kitty litter
- k. Scratching post

9. What is a good way to keep flowers pretty in a yard?

- r. Pull off the blooms
- m. Plant fences around them
- e. Use less-toxic pesticides



10. What do you do with paint when you're done with it?

- r. Bring it to a household hazardous waste drop off event
- w. Leave it on your neighbors doorstep
- d. Pour it down the drain



The point is:

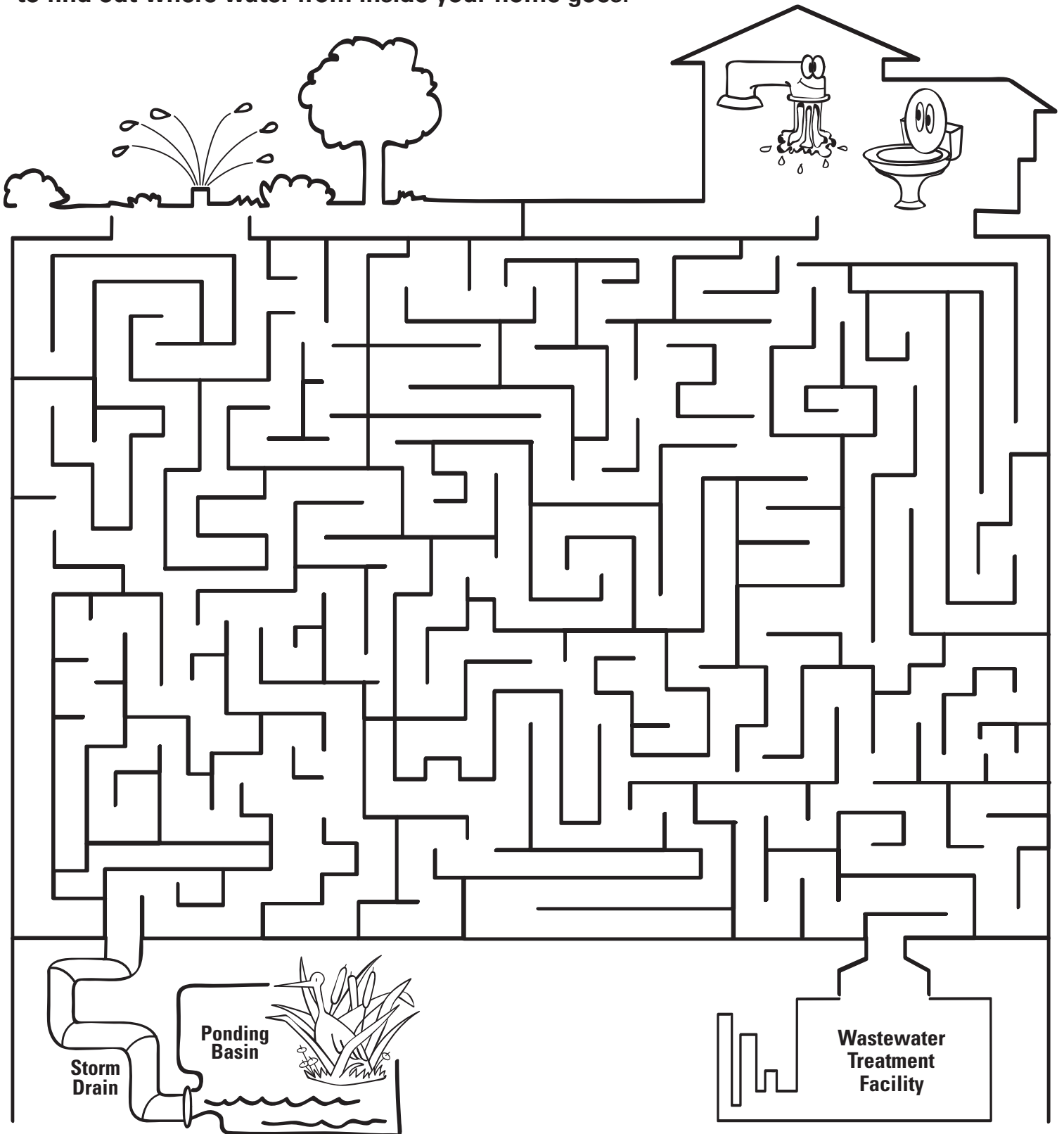
**UH OH!**

There is litter on the ground. Litter looks bad and it is harmful to the environment. You can help keep our city and water clean. Always put your trash in the garbage. You can also help by picking up other trash you see on the ground. Remember...Please don't litter.



# CLEAN WATER MAZE

Extra water from outside your home (runoff) goes to ponding basins, creeks and canals. Water from indoors goes to a wastewater treatment facility to be cleaned. Use a blue crayon to find out where excess water from outside your home goes. Use a red crayon to find out where water from inside your home goes.



# MATCH THE NUMBERS

Match the letters to the numbers and write the secret message.

25

15

21

3

1

14

8

5

12

16

3

15

14

19

5

18

22

5

23

1

20

5

18

1

14

4

11

5

5

16

9

20

3

12

5

1

14

1=A

2=B

3=C

4=D

5=E

6=F

7=G

8=H

9=I

10=J

11=K

12=L

13=M

14=N

15=O

16=P

17=Q

18=R

19=S

20=T

21=U

22=V

23=W

24=X

25=Y

26=Z

Fresno Water Tower